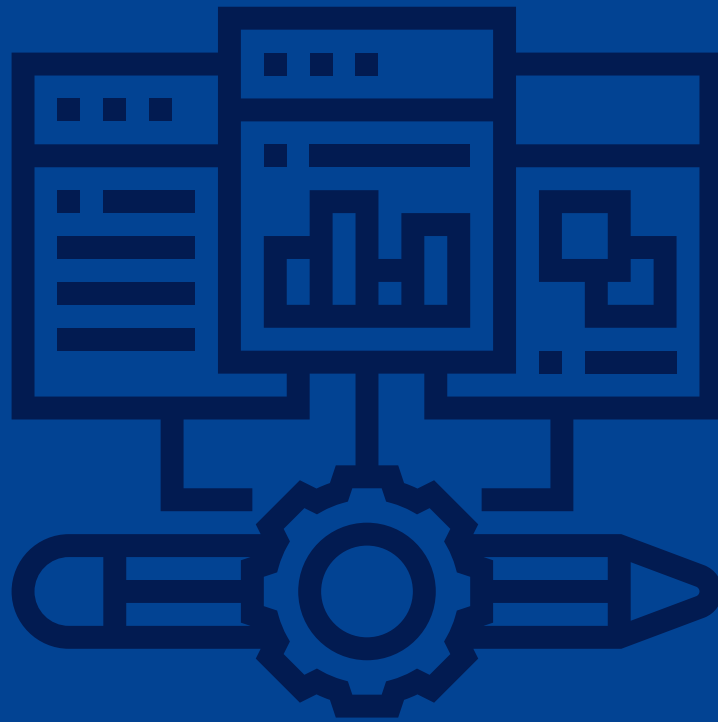


# DATA-DRIVEN DESIGN



**InPlanEd**



**InPlanEd**



Co-funded by  
the European Union

# DATA-DRIVEN DESIGN

## Definition

Data-driven design is a design approach that relies on data to inform decision-making throughout the design process. It involves collecting and analyzing data to gain insights into user behavior, preferences, and needs, and using that information to guide design decisions. Examples of data that can be used in data-driven design include user feedback, analytics data, and user research.

## References

# Khan, A.K. (2012). Impact of Personal Software Process on Software Quality. IOSR Journal of Computer Engineering, 1, 21-25.