

INTEGRATED PLANNING APPROACHES IN HIGHER EDUCATION:
COLLABORATIVE EDUCATIONAL PROTOTYPE TOWARDS
INTEGRATED APPROACHES IN THE PLANNING OF INCLUSIVE,
PEOPLE-CENTRIC AND CLIMATE-RESILIENT CITIES



Co-funded by
the European Union

InPlanEd



Project: 2022-1-EL01-KA220-HED-000089374 Erasmus+
Co-funded by the European Union. Views and opinions expressed are however those of the author(s) only and do not necessarily reflect those of the European Union. Neither the European Union nor the granting authority can be held responsible for them.



commons/pace

University
of Cyprus

AESOP

πομπηπ

INTEGRATED PLANNING APPROACHES IN HIGHER EDUCATION: COLLABORATIVE EDUCATIONAL PROTOTYPE TOWARDS INTEGRATED APPROACHES IN THE PLANNING OF INCLUSIVE, PEOPLE-CENTRIC AND CLIMATE-RESILIENT CITIES
Project number: 2022-1-EL01-KA220-HED-000089374 Erasmus+



commons/space



AESOP

πομπή

Introduction I

Planning for inclusive, people-centric and climate-resilient cities

Date (to be modified by partners)



InPlanEd



Project: 2022-1-EL01-KA220-HED-000089374 Erasmus+
Co-funded by the European Union. Views and opinions expressed are however those of the author(s) only and do not necessarily reflect those of the European Union. Neither the European Union nor the granting authority can be held responsible for them.

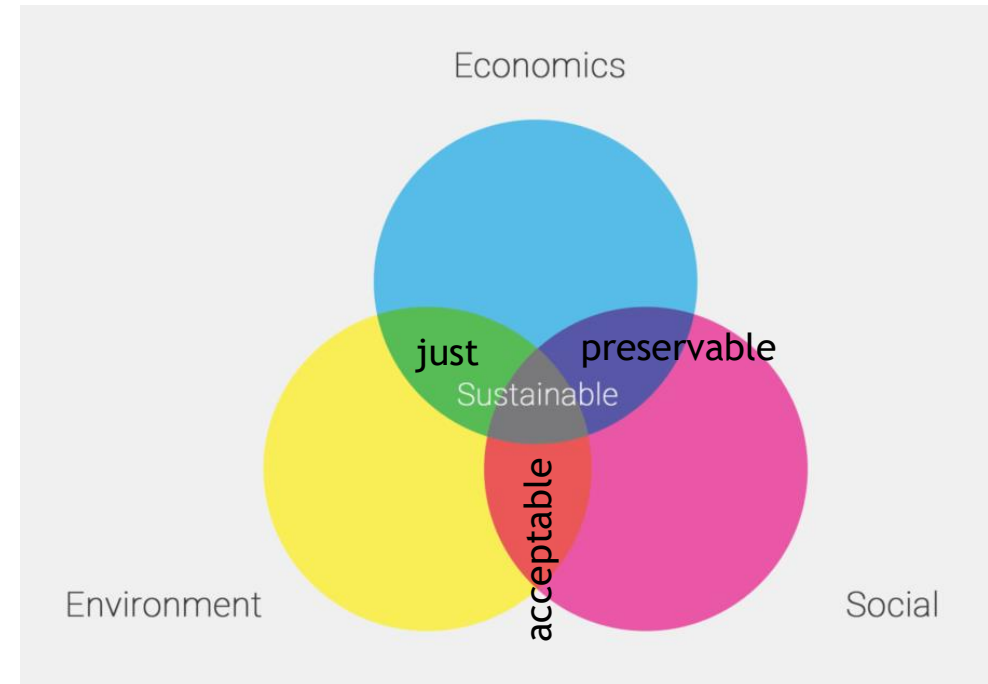
What is sustainability?



InPlanEd

Multidimensional concept-holistic approach

- **Environment:** Ecological integrity
- **Economic:** Access to resources, independence and financial security
- **Social:** Public health, security, human interaction, personal, labor and cultural rights



Source: <https://www.pozzoni.co.uk/practice/sustainability>

The origins of “sustainability”



- “Our common future” or Bruntland Report, 1987
- Definition:
 - *“Development that meets the needs of the present without compromising the ability of future generations to meet their own needs”*

Evolution process



The need for sustainability

- Climate change
- Nature resources are limited
- Rapid urbanization
- Social inequalities
- Public health issues
- Over-use of renewable resources
- Pollution
- Unattractive/inaccessible urban space



Source: <http://www.standrewshfx.ca>



Source: <https://www.history.com/>



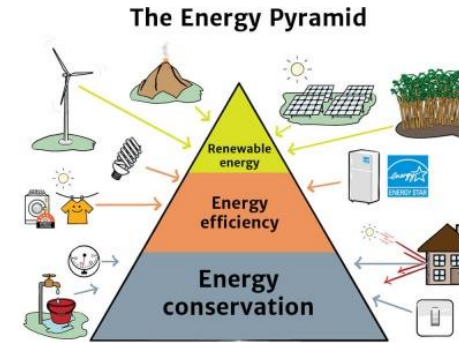
Source: <https://city2city.network/>



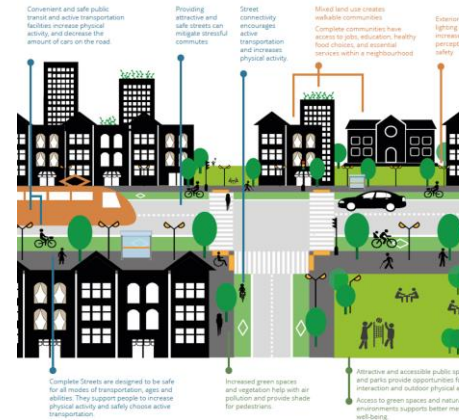
Source: <https://www.cabq.gov>

What sustainability can achieve

- Ensures a future for all
- Reduced energy usage
- A healthy habitat for all
- Societal impact
- Accessible cities
- Protection of natural environment
- Ecosystems preservation



Source: <https://www.solarschools.net/>



Source: <https://participatoryplanning.ca/>



Source: <https://www.thezebra.com/>



Source: <https://www.un.org/es/>

Planning sustainable cities



According to Rio+20, it is important to:

- Promote an integrated planning approach to urban development for building sustainable cities (housing, social services, health and safe environment, sustainable transport system, green spaces and parks, job provision, water supply, sustainable energy)
- Facilitate sustainable management of urban waste (3Rs)
- Give emphasis to cities that implement sustainable development policy measures and adopt sustainable urban planning principles
- Highlight the important role of local administrative bodies in developing future visions for cities
- Foster the cooperation between cities



Source: <https://www.treehugger.com/>

Planning sustainable cities



InPlanEd

The formal framework of planning systems entail

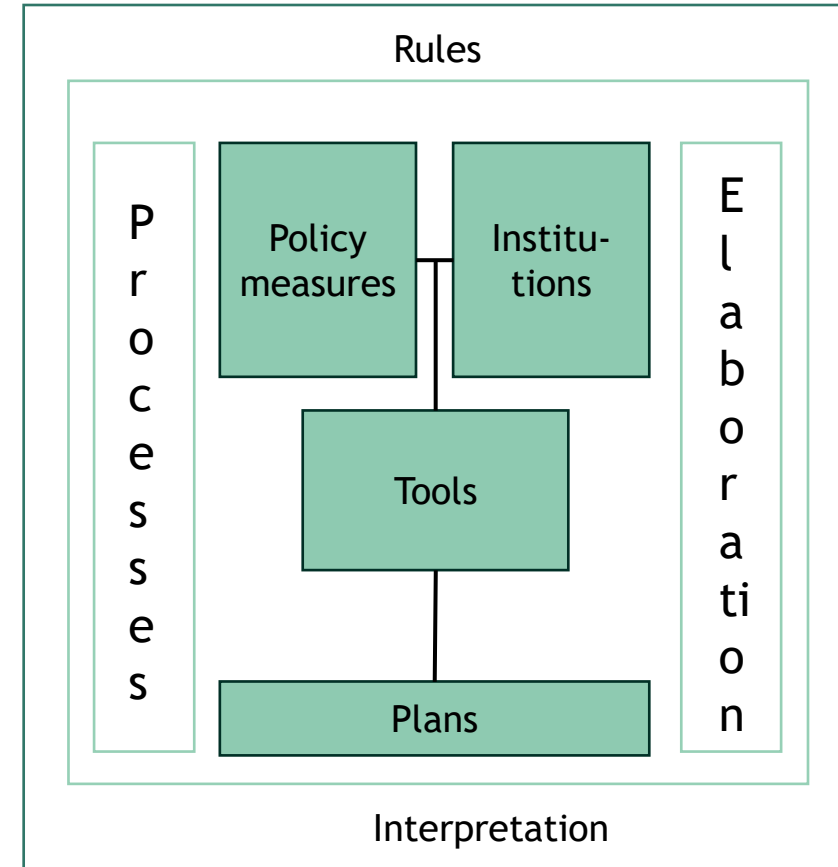
- Policy measures, institutions, processes and plans

Factors affecting the formulation of the formal planning framework

- Political and economic conditions
- National institutional and constitutional systems
- Socio-cultural structure

Basic characteristic of formal planning framework

- Who's in charge? National or local administration?
 - National vs local relations, State vs citizen, formal system operation: efficient vs inefficient



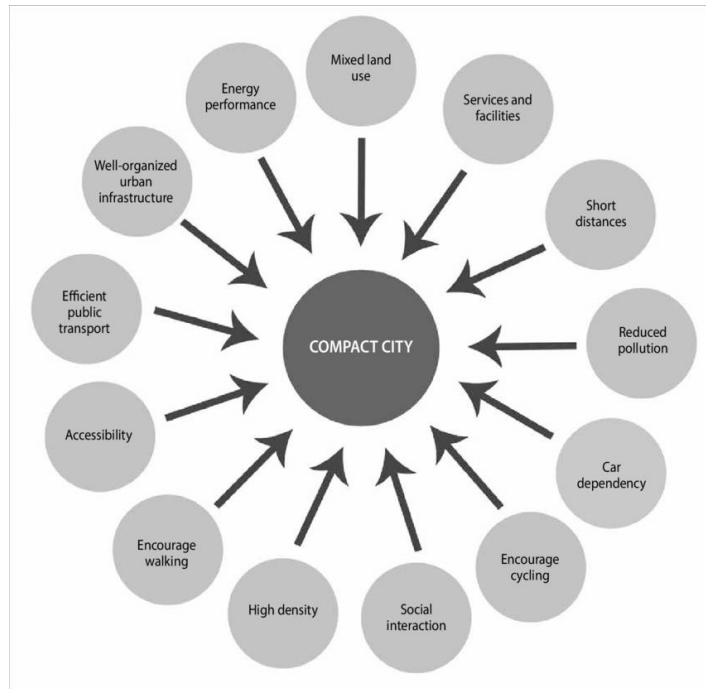
Towards an integrated approach

- Conventional planning approaches do not consider both transport and urban dimensions
- However, spatial planning is an **interdisciplinary concept**
- Urban and transport dimensions play a pivotal role in shifting from conventional to sustainable approaches
- How could these be linked?
 - Through combined urban and transport policies and intervention under the main concept of **compact city**

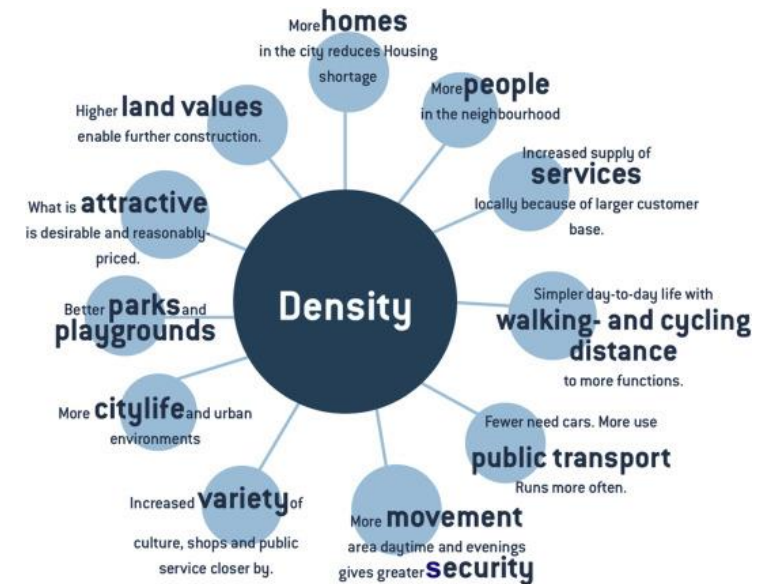


Source: <https://www.treehugger.com/>

Compact city: an “old” concept for the future



Source: Rogatka and Ribeiro, 2015



Source: Bibri et al., 2020

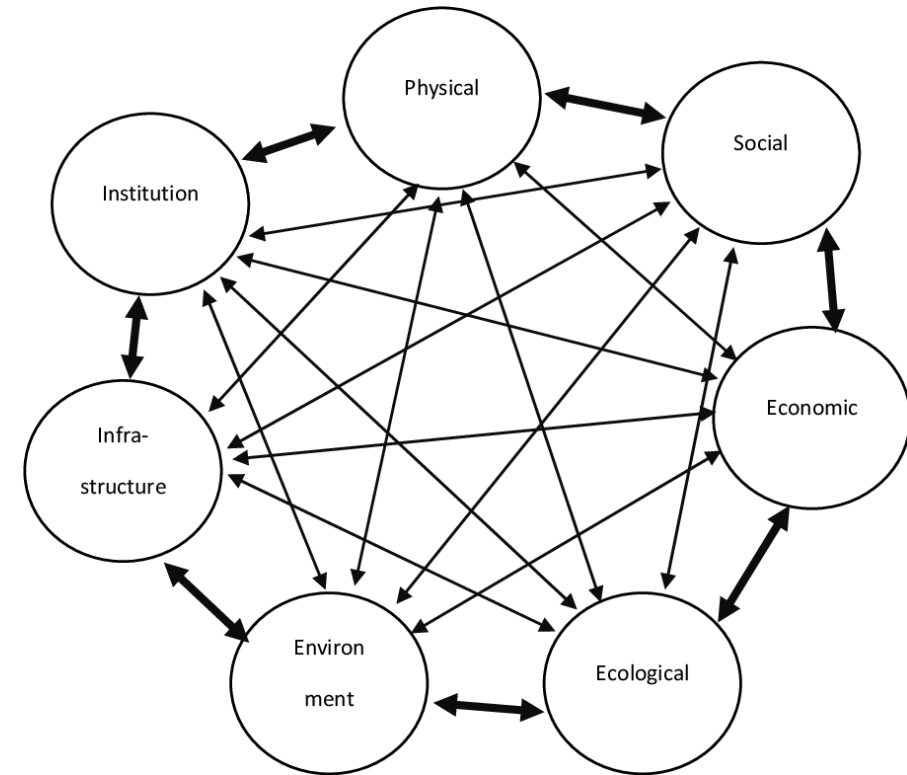
Compact city: an “old” concept for the future



InPlanEd



Source: Roychansyah and Felasari, 2016



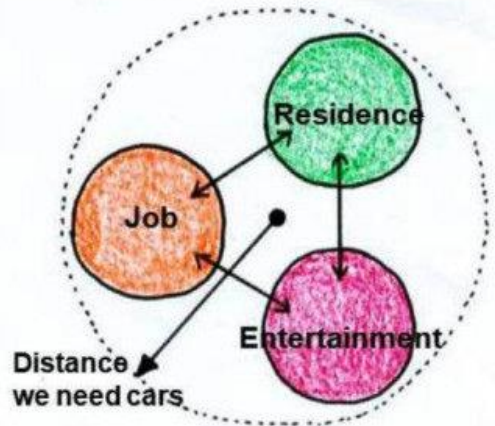
Source: Bhagwat and Devadas, 2020

Compact city: an “old” concept for the future

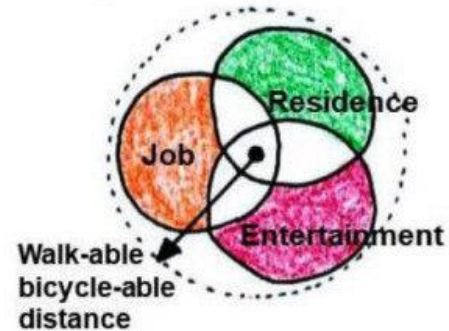


InPlanEd

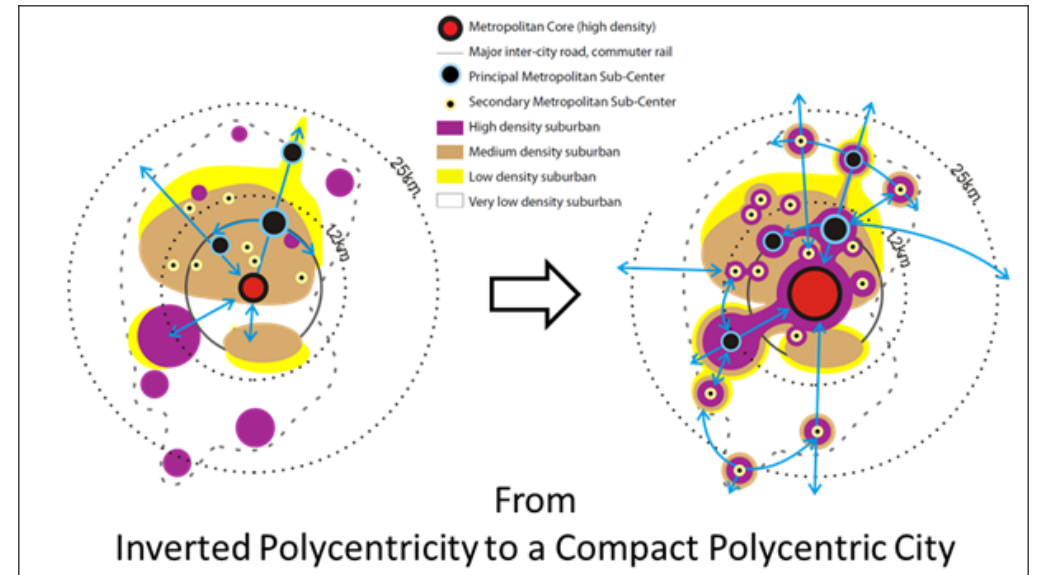
Zoning of functions makes people depend their transportation on private cars.



Compact nodes can reduce car uses and people can walk or use bicycles in the community.

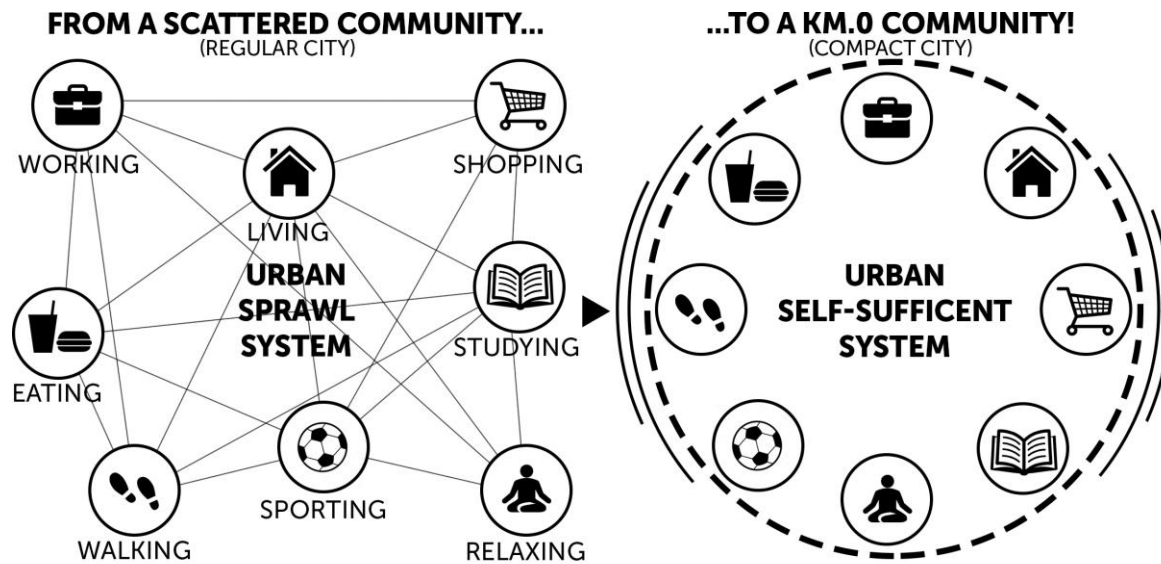


Source: Shrivastava and Singh, 2020

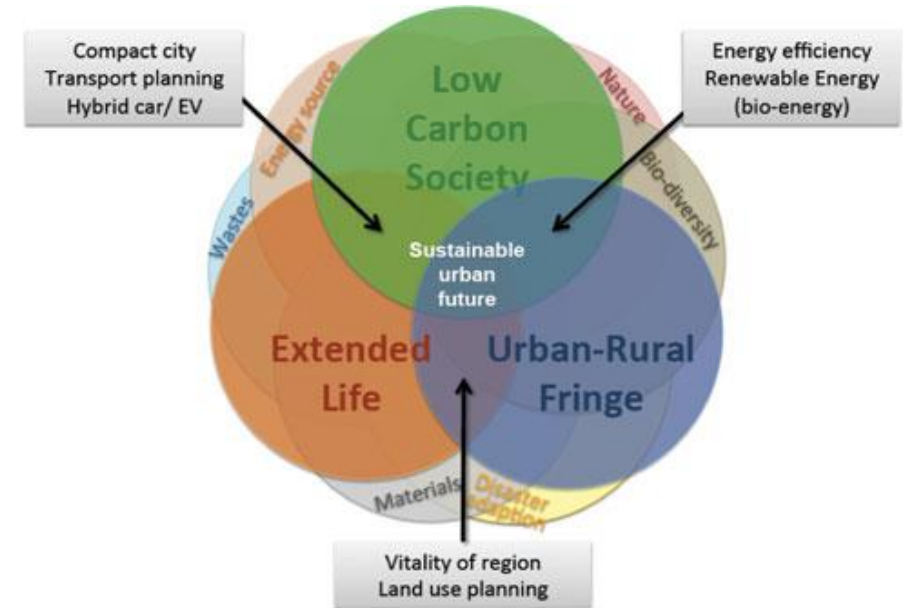


Source: <https://www.joburg.org.za/>

Compact city: an “old” concept for the future

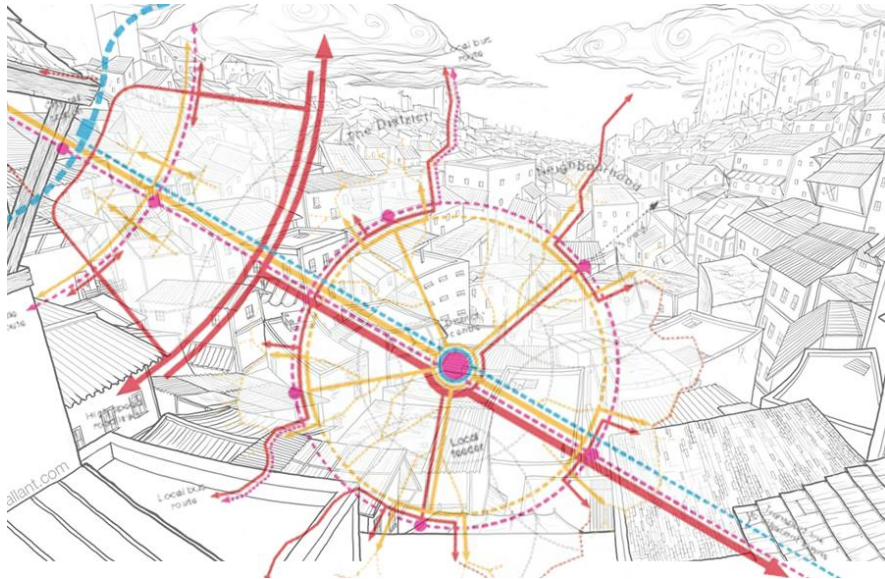


Source: <http://www.tari-architects.com/portfolio-item/seoul-compact-city/>

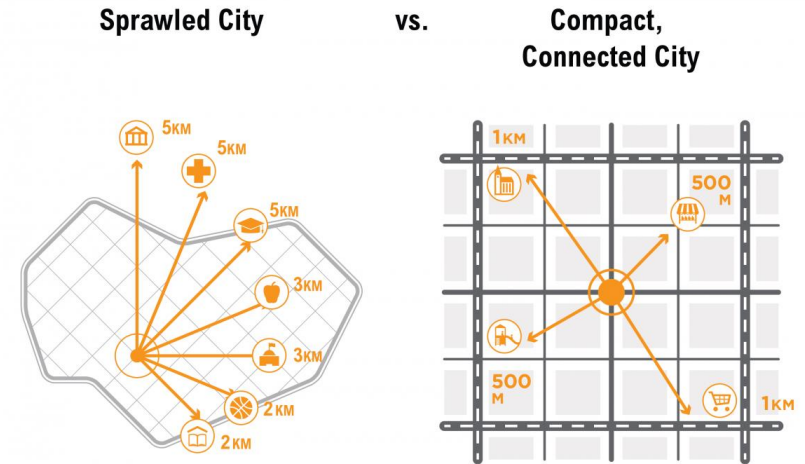


Source: Han et al., 2012

Compact city: an “old” concept for the future



Source: <https://www.re-thinkingthefuture.com/>



www.wri.org/cities-safer-design

 WORLD RESOURCES INSTITUTE

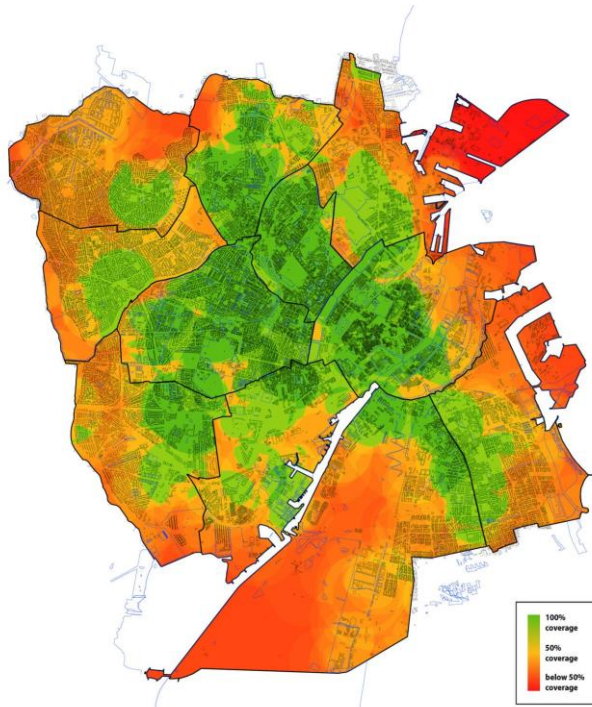
Source: <https://slocat.net/1527-2/>

Compact city: an “old” concept for the future



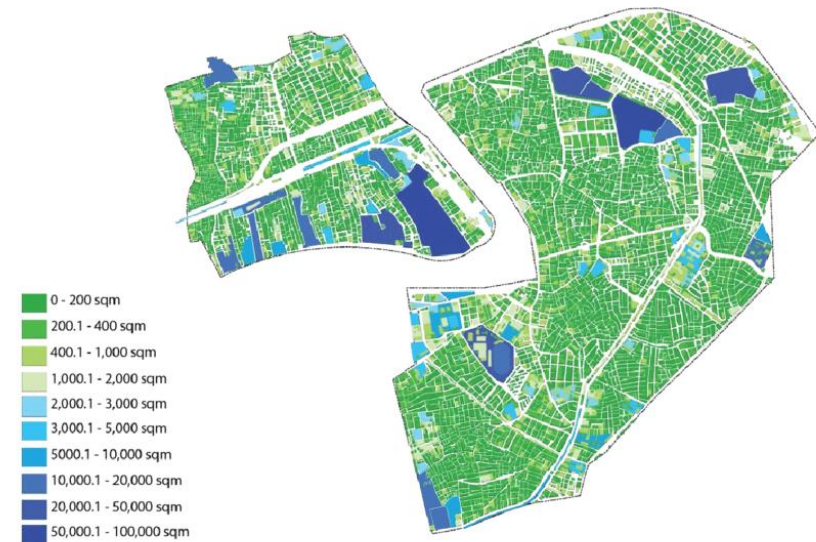
InPlanEd

Copenhagen



Source: <https://www.burohappold.com/>

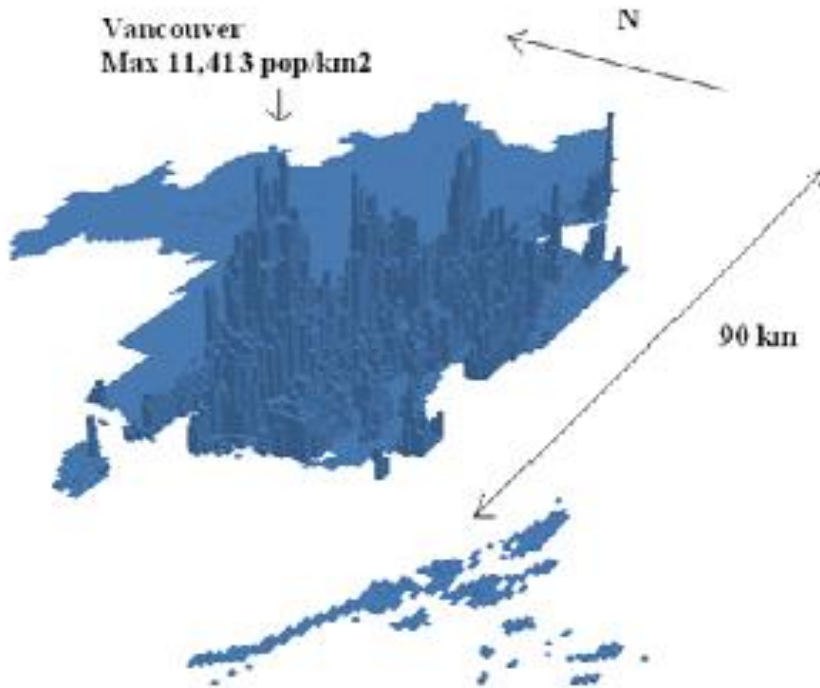
Damietta



Source: Heysham et al., 2021

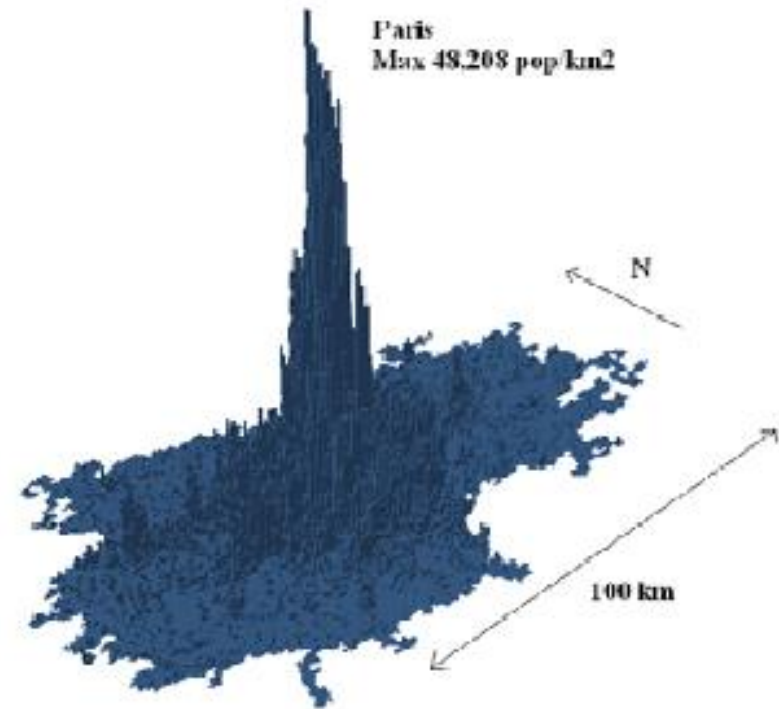
Compact city: an “old” concept for the future

Vancouver



Source: <https://www.oecd.org/>

Copenhagen

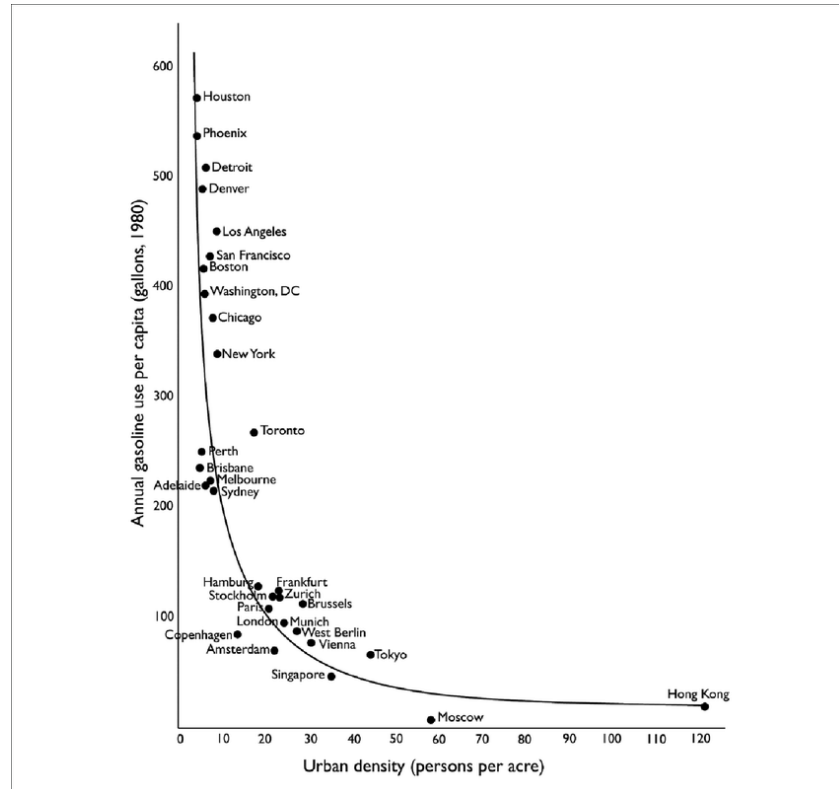


Source: <https://www.oecd.org/>

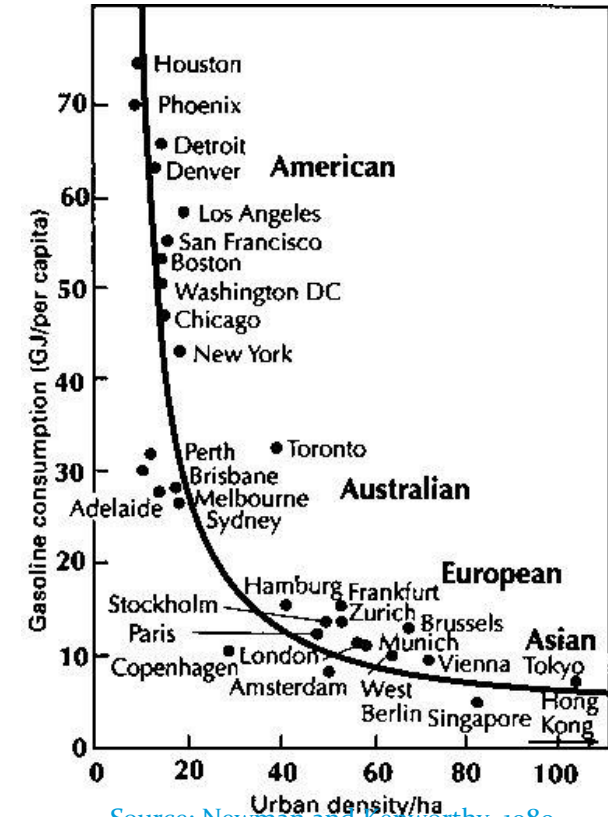
Compact city: an “old” concept for the future



InPlanEd



Source: Newman and Kenworthy, 1989

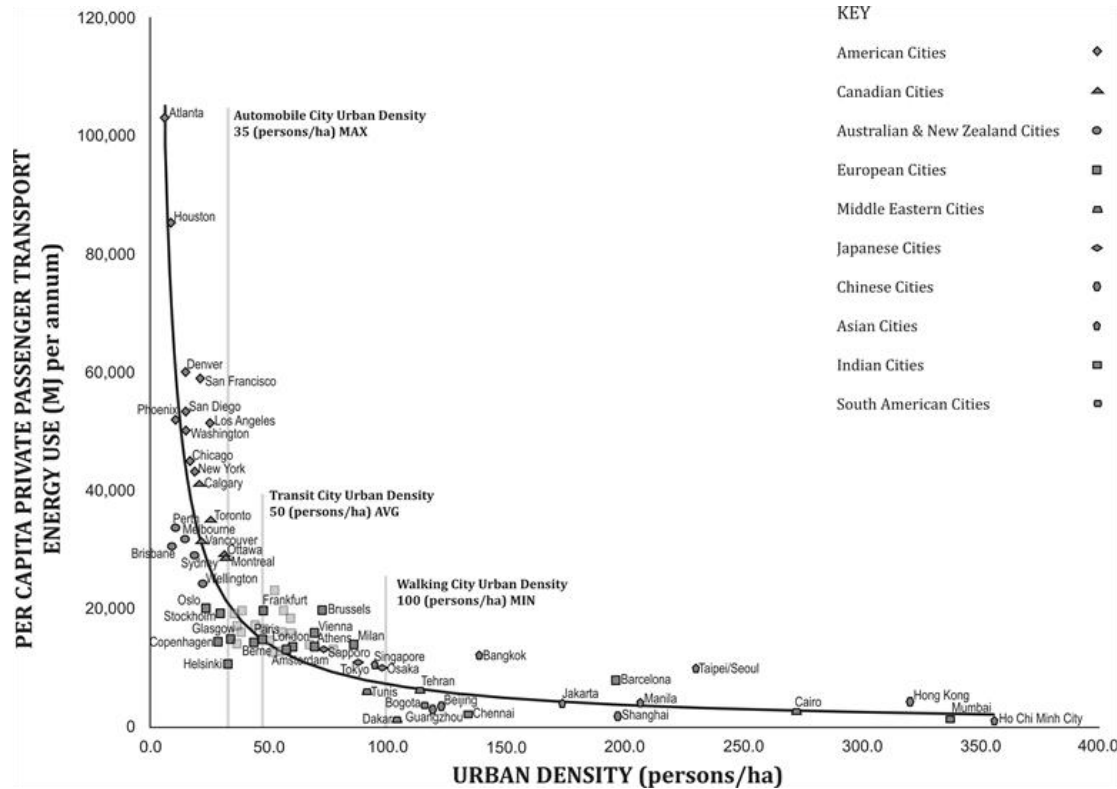


Source: Newman and Kenworthy, 1989

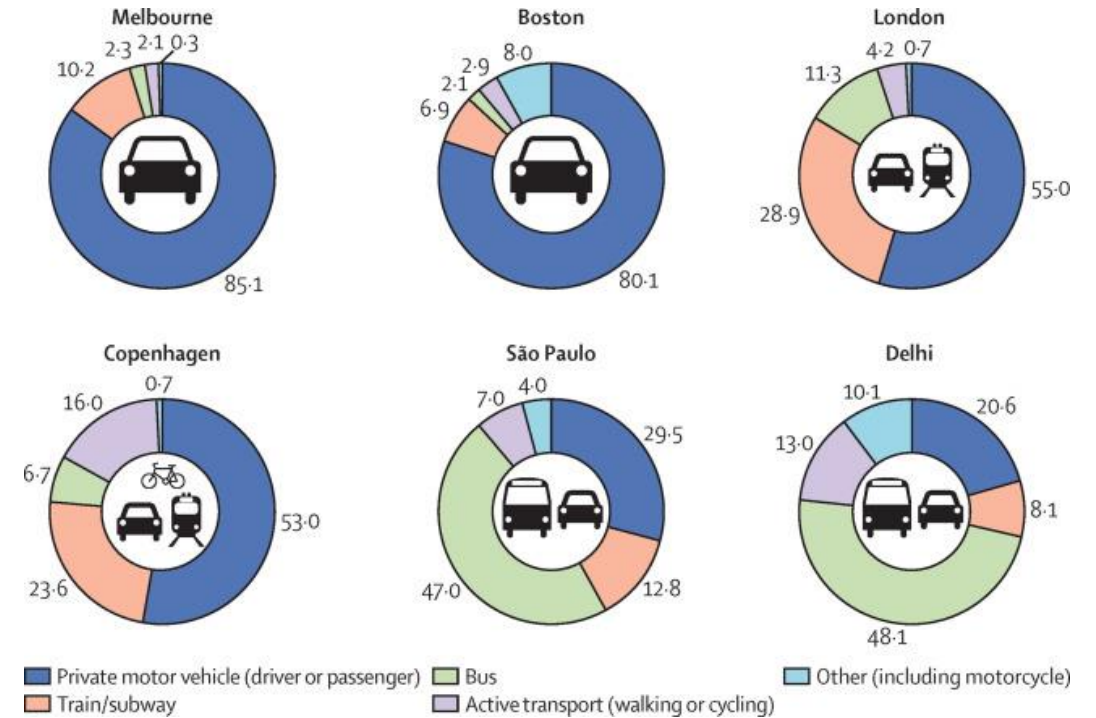
Compact city: an “old” concept for the future



InPlanEd



Source: Newman and Kenworthy, 2015



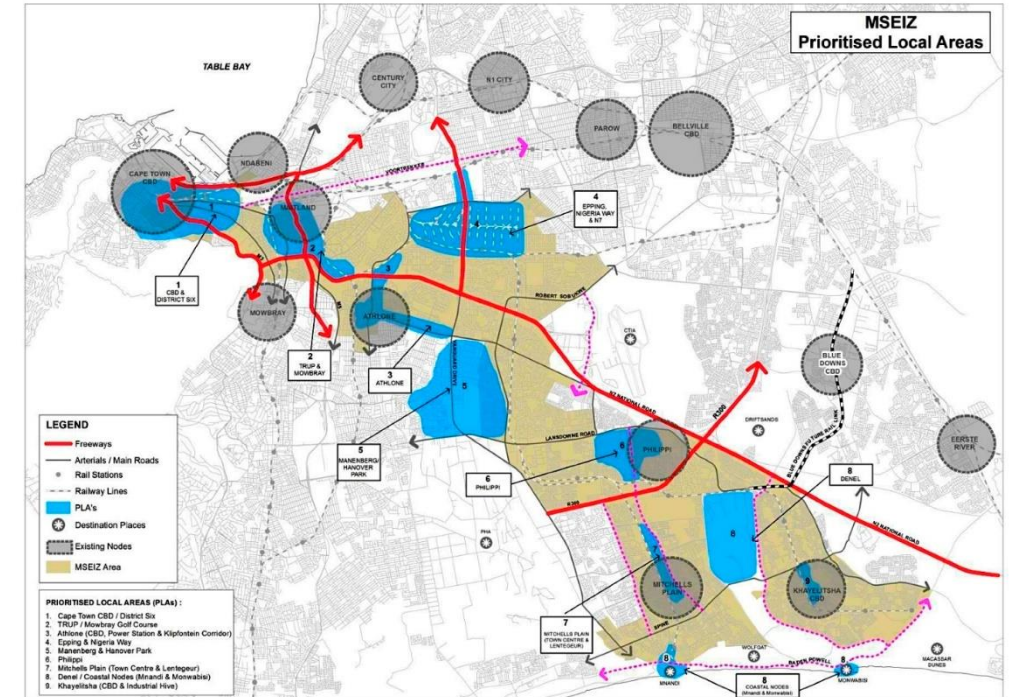
Source: Stevenson et al., 2016

Integrated urban-transport planning

- Integrated regional/urban and transport planning constitutes a basic principle for building sustainable cities
- Land uses and urban identity should be related with transport modes and operations

Goals

- Compact cities
- Urban sprawl mitigation
- Reduction of GHG emissions
- Human-friendly cities
- Sharing and circular economy
- Self-retained citizens, responsible with the natural and urban environment
- Equitable, accessible and cohesive cities



Source: Moyo et al., 2021



InPlanEd

thank you!



Co-funded by
the European Union

INTEGRATED PLANNING APPROACHES IN HIGHER EDUCATION:
COLLABORATIVE EDUCATIONAL PROTOTYPE TOWARDS
INTEGRATED APPROACHES IN THE PLANNING OF INCLUSIVE,
PEOPLE-CENTRIC AND CLIMATE-RESILIENT CITIES





commons/space



παιμενα



InPlanEd