

INTEGRATED PLANNING APPROACHES IN HIGHER EDUCATION:  
COLLABORATIVE EDUCATIONAL PROTOTYPE TOWARDS  
INTEGRATED APPROACHES IN THE PLANNING OF INCLUSIVE,  
PEOPLE-CENTRIC AND CLIMATE-RESILIENT CITIES



Co-funded by  
the European Union

# InPlanEd



**Project: 2022-1-EL01-KA220-HED-000089374 Erasmus+**  
Co-funded by the European Union. Views and opinions expressed are however those of the author(s) only and do not necessarily reflect those of the European Union. Neither the European Union nor the granting authority can be held responsible for them.



commons/pace



παιμετα

INTEGRATED PLANNING APPROACHES IN HIGHER EDUCATION: COLLABORATIVE  
EDUCATIONAL PROTOTYPE TOWARDS INTEGRATED APPROACHES IN THE  
PLANNING OF INCLUSIVE, PEOPLE-CENTRIC AND CLIMATE-RESILIENT CITIES  
Project number: 2022-1-EL01-KA220-HED-000089374 Erasmus+



commonsspace



πομπή

## Participatory Design and Planning: Cases from Practice (Greece)

Date TBC



# InPlanEd



**Project: 2022-1-EL01-KA220-HED-000089374 Erasmus+**  
Co-funded by the European Union. Views and opinions expressed are however those of  
the author(s) only and do not necessarily reflect those of the European Union.  
Neither the European Union nor the granting authority can be held responsible for them.



InPlanEd

# Greek Case

## Participatory Planning in a Centralized Governance System

### Institutional Conditions and Challenges

A first “wave” during the 70s and 80s. Democratization of the political system but small steps in regard to “participatory planning”.

A second (?) “wave” in the years after 2011.

Participation in the context of a centralized and hierarchical governance system.



Redevelopment of the old immigrants settlement in Thiva, Greece, 1985



Poster for Stakeholders Engagement,  
Sustainable Mobility Plan, Municipality of  
Palaio Faliro, Greece



InPlanEd

# Greek Case

## Participatory Planning in a Centralized Governance System

### Institutional Conditions and Challenges

- European Policies: Introduction of Participatory Methods and Community Engagement into a variety of programs.
- Community Engagement is considered an important condition in the context of just transition and climate change adaptation.



InPlanEd

# Greek Case

## Participatory Planning in a Centralized Governance System

### Institutional Conditions and Challenges

- Bottom Up: Social movements, urban and environmental conflicts (Is it “participatory planning»?)
- Top down: European or national projects. Mainly consultation (Is it ”participatory planning”?)
- New groups and approaches of experimental research and design



Pocket Parks in Thessaloniki, 2017





InPlanEd

# New efforts

## New Multiscalar Approaches to Participation in Greece

- Capacity Building and Training in Participatory Methods and Approaches
- New digital tools that enable citizen engagement and participation
- Community Engagement and Participation and Sustainable Development
- Design of Public Spaces

ΗΡΑΚΛΕΙΟ ΘΕΣΣΑΛΟΝΙΚΗ ΠΑΤΡΑ  
 ΘΕΣΣΑΛΟΝΙΚΗ ΠΑΤΡΑ ΑΘΗΝΑ ΗΡΑΚΛΕΙΟ ΘΕΣΣΑΛΟΝΙΚΗ  
 Η.GR **ΛΟΚΑΛΩATCH.GR** ΛΟΚΑΛΩΑΤΗΡΙΑ  
 ΜΟΙ ⇐ ΔΗΜΟΤΕΣ ⇒ ΔΗΜΟΙ ⇐ ΔΗΜΟΤΕΣ  
 ΚΗ ΕΠΙΚΟΙΝΩΝΙΑ ΣΥΜΜΕΤΟΧΗ ΕΠΙΧΕΙΡΗΣΙΑΚΗ  
 Η ΕΛΕΓΧΟΣ ΔΡΑΣΗ ΕΛΕΓΧΟΣ ΔΡΑΣΗ  
 ΕΡΓΑΣΤΗΡΙΟ 📅 31/03 🕒 17:30-20:00  
 ΚΟΙΝΩΝΙΚΟΣ ΧΩΡΟΣ ΙΔΡΥΜΑΤΩΝ ΚΑΙΝΟΤΟΜΙΑΣ



# Strengthening Local Communities

Community Engagement and decision-making in Greek Municipalities



Λοκαλwatch - Citizen Engagement Platform



Public Participation Planning Project for the Sustainability of Greek Island Gavdos





InPlanEd

# Λοκαλwatch

## Citizen Engagement Platform

Localwatch is a platform that aspires to allow citizens to monitor the activities of their local representatives, and to communicate directly with them, giving citizens the opportunity to experience a sense of effective participation in the community and the ability to improve their daily lives.



InPlanEd

# Λοκαλwatch

## Citizen Engagement Platform

Vouliwatch (lead partner)  
Commonspace  
ACF Funding Scheme - Bodossaki Foundation

Participatory methods in the preparation of the platform of “localwatch”

- 4 Municipalities (Athens, Thessaloniki, Heraklion, Patra)
- 8 workshops (citizen ideas - platform tools testing)
- More than 100 participants (citizen groups, minority groups representatives, local administration representatives etc.)

The events took place between Jan 2022 and Jan 2023.

Platform launch (December 2023)



InPlanEd

# Λοκαλwatch

## Citizen Engagement Platform

Main Components of the Platform:

- ASK THE POLITICIANS
- SHARE YOUR IDEAS
- CO-CREATING THE BUDGET
- PARTICIPATORY ACTIONS
- EVALUATE YOUR MUNICIPALITY



InPlanEd

# Gavdos

## Citizen Engagement for Sustainable Development

The “Public Participation Planning Project for the Sustainability of Greek Island Gavdos” is a multidisciplinary approach designed for a small island located under Crete, in Greece. This work seeks to deal with the decreasing population, lack of job/social opportunities, and inadequate infrastructure through public involvement. The sustainable development plan aims to create communities by including inhabitants, actors, and agents interested in participating in the Cultural, Local, Energy, Production, Research, and Visitors’ Communities.

The implemented toolkit includes interactive and participatory workshops, digital applications, tailor-made questionnaires, and innovative handcrafted models (such as the spatial SWOT analysis).



### Συμμετοχικός Σχεδιασμός για τη Βιώσιμη Ανάπτυξη

Δημιουργία κοινού οράματος  
Στήριξη του υφιστάμενου πληθυσμού και προσέλκυση νέων μόνιμων κατοίκων  
Σύμπραξη Δήμου, Κατοίκων, Επιχειρήσεων και Κοινωνίας των Πολιτών  
Σχεδιασμός έργων, μέτρων, δράσεων, χωρικών πολιτικών  
Εύρεση πόρων και δέσμευση υλοποίησης με συμμετοχική λειτουργία  
Συναίνεση, συνεργατισμός, αλληλεγγύη





Stakeholder Engagement and Community Participation Workshops



Stakeholder Engagement  
and Community  
Participation Workshops



Stakeholder Engagement and Community Participation Workshops



# Cultural HIDRANT **InPlanEd**

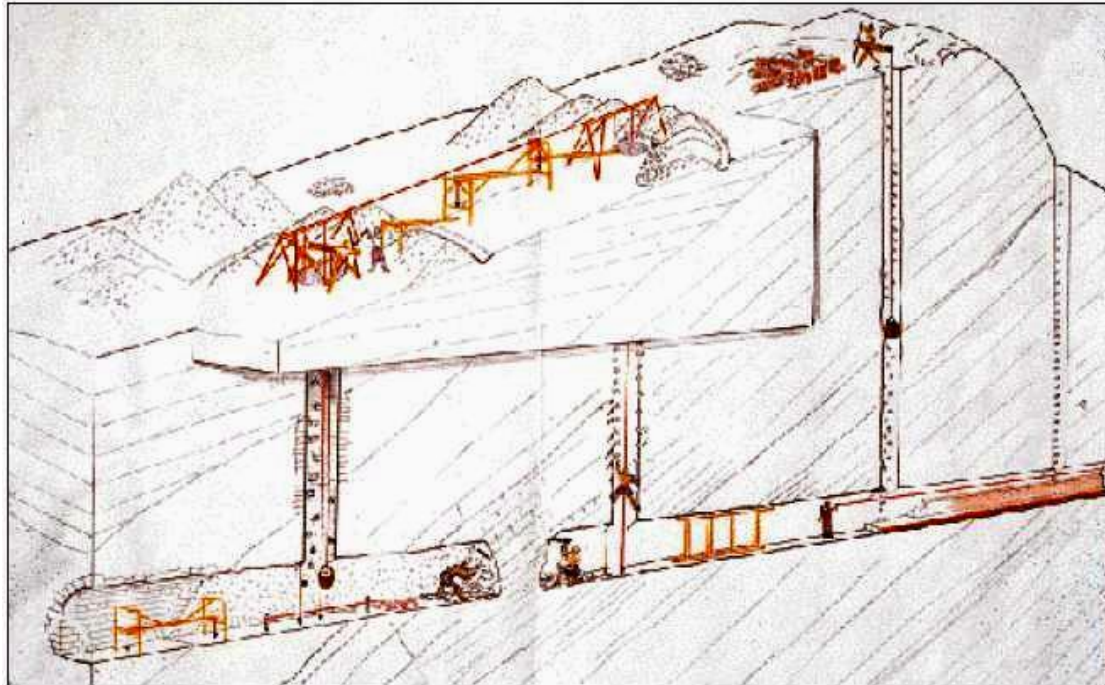
Culture, Participation and the Reclamation of Public Space

## Subterranean roman Hadrian Aqueduct

The Hadrian Aqueduct is one of the most complex and impressive works of the Roman period in Athens.

Construction: 125 - 140 AD. (Roman emperors Hadrian and Antoninus) in order to satisfy the increased water supply needs of the city.

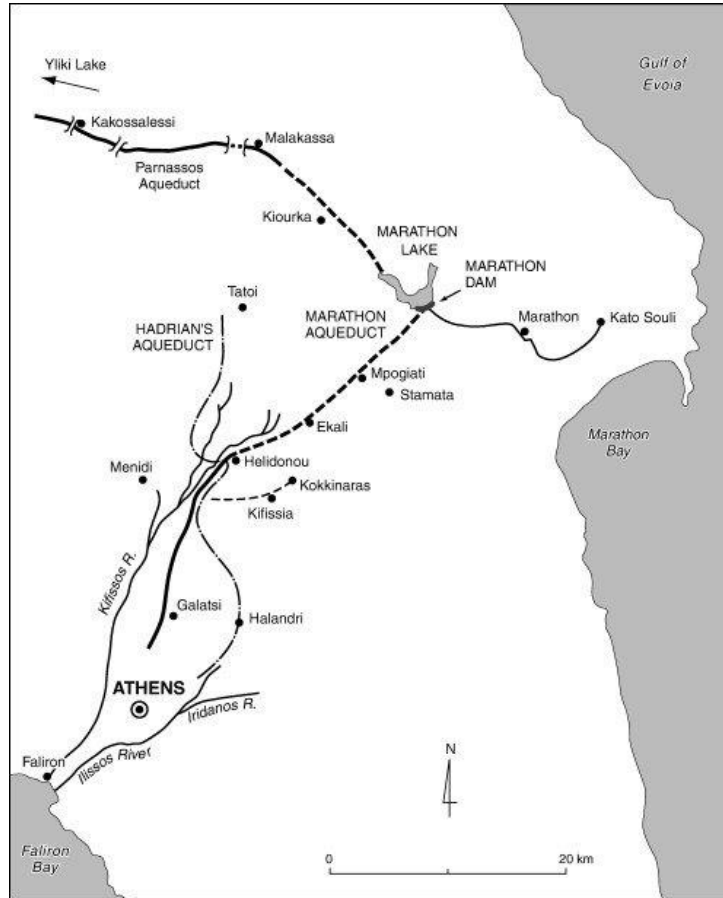
Built underground: maximum height of 2 m, width of 50 cm, depth till 40 meters below the surface, transporting water only by gravity and abstracting groundwater along its route.



Construction method of the Hadrian Aqueduct  
(Manolis Korre)



About 25 km long, from Mt Parnitha to Kolonaki



Indicative drawing of the Hadrian's aqueduct and the Marathon dam aqueduct tunnel (EYDAP) (Koumparelis, Maria Kaika)



# Cultural HIDRANT **InPlanEd**

## Culture, Participation and the Reclamation of Public Space

### Subterranean roman Hadrian Aqueduct

Total length: 25 km, from Mount Parnitha to Kolonaki (center of Athens), crosses 8 municipalities and includes several secondary aqueducts that collected water.

Vertical wells: dug every 30-40 meters.

- preserved and lined with stonework to serve for the cleaning and maintenance of the aqueduct
- terrestrial traces of the aqueduct, still visible in several parts of the city.



# Cultural HIDRANT

InPlanEd  
Culture, Participation and the  
Reclamation of Public Space

## Quick timeline and uses

**2nd century AD:** build between 125 and 140 AD, to satisfy the increased water supply needs of the city

**Till 1458:** water supply of the Athens area

**1458-1833** (Turkish occupation of Athens): abandoned (lack of maintenance)

**From 1833 till 1960:** gradual increase of the population and problem of the city's water supply,

- maintenance work, the Aqueduct is operational again,
- main source of water for Athens till 1930 (Marathon Dam)

**From 1960 till now:** abandoned due to urban water pollution > **60 years of shutdown**

- The Aqueduct continues to function on its own, transporting significant quantities (non-potable waters) and abstracting groundwater along its route. Its different parts nearly independent to each other support its ability to irrigate different areas (but it's currently used in a few cases).
- E.g. : Municipality of Metamorfosi, irrigation of all urban green areas in the area since 1999

## Subterranean roman Hadrian Aqueduct





Cultural Hidden  
Identities ReAppear  
through Networks  
of WaTer

CULTURAL  
HIDRANT



Cultural HIDRANT **InPlanEd**

Culture, Participation and the  
Reclamation of Public Space

## "Cultural HIDRANT" project in Halandri

Cultural H.ID.R.A.N.T. is for "Cultural Hidden Identities ReAppear through Networks of Water"

UIA: The project was selected and funded through the European action program, Urban Innovative Actions (UIA), which aims to promote sustainable urban development.

Coordinator: Municipality of Halandri  
Partners: EYDAP, Commonsense Co-op, Thymio Papayannis and Associates Inc, Mediterranean Institute for Nature and Anthropos, Institute of Regional Development of Panteion University, AMKE "Ohi Paizoume" / UrbanDig Project, Ephorate of Antiquities of East Attica



InPlanEd

# Cultural HIDRANT

## Culture, Participation and the Reclamation of Public Space

### Hadrian Aqueduct as an environmental and cultural commons

- The project employs Hadrian Aqueduct as a vehicle to reveal the local cultural capital, tangible and intangible heritage of Halandri through water networks, beyond the usual 'sight-seeing' approach and towards the reconstitution of its contemporary use-value as heritage and water commons and potential community network.
- The citizens and institutions of the city of Halandri actively participate in the project through interactive workshops, participatory planning, and cultural activities.



Hadrian's aqueduct

re-exploitation of Hadrian water,



Culture Community

the regeneration of Hadrian routes,



Underground Identity

the co-transformation of certain spots into Hadrian-watered 'urban gardens'.



Participatory process - multiple stakeholders from local community



## ΤΟ ΠΡΟΓΡΑΜΜΑ CULTURAL HIDRANT ΣΕ ΑΡΙΘΜΟΥΣ

### ΠΡΩΤΟ ΔΙΚΤΥΟ ΜΗ-ΠΟΣΙΜΟΥ ΝΕΡΟΥ

- 4.000 μ υπόγειου δικτύου
- 100 «έξυπνοι» μετρητές κατανάλωσης νερού
- 10.000 μ<sup>3</sup> ετήσια εξοικονόμηση πόσιμου νερού
- 25.000 μ<sup>3</sup> συνολική ετήσια εξοικονόμηση νερού
- 1 game app [www.dropamessage.gr](http://www.dropamessage.gr)

### ΣΥΜΜΕΤΟΧΗ ΤΩΝ ΣΧΟΛΕΙΩΝ

- 125 συνεδρίες εργαστηρίων
- 13 σχολεία
- 526 μαθητές & μαθήτριες
- 36 εκπαιδευτικοί
- 147 γονείς

### ΠΡΑΣΙΝΕΣ ΑΣΤΙΚΕΣ ΑΝΑΠΛΑΣΕΙΣ

- 21.500 μ<sup>2</sup> νέοι κοινόχρηστοι και πράσινοι χώροι
- 1.500 μ<sup>2</sup> των παραπάνω αναπλάσεων γίνονται με συμμετοχικό σχεδιασμό
- 14.800 θάμνοι και 180 δέντρα προς φύτευση

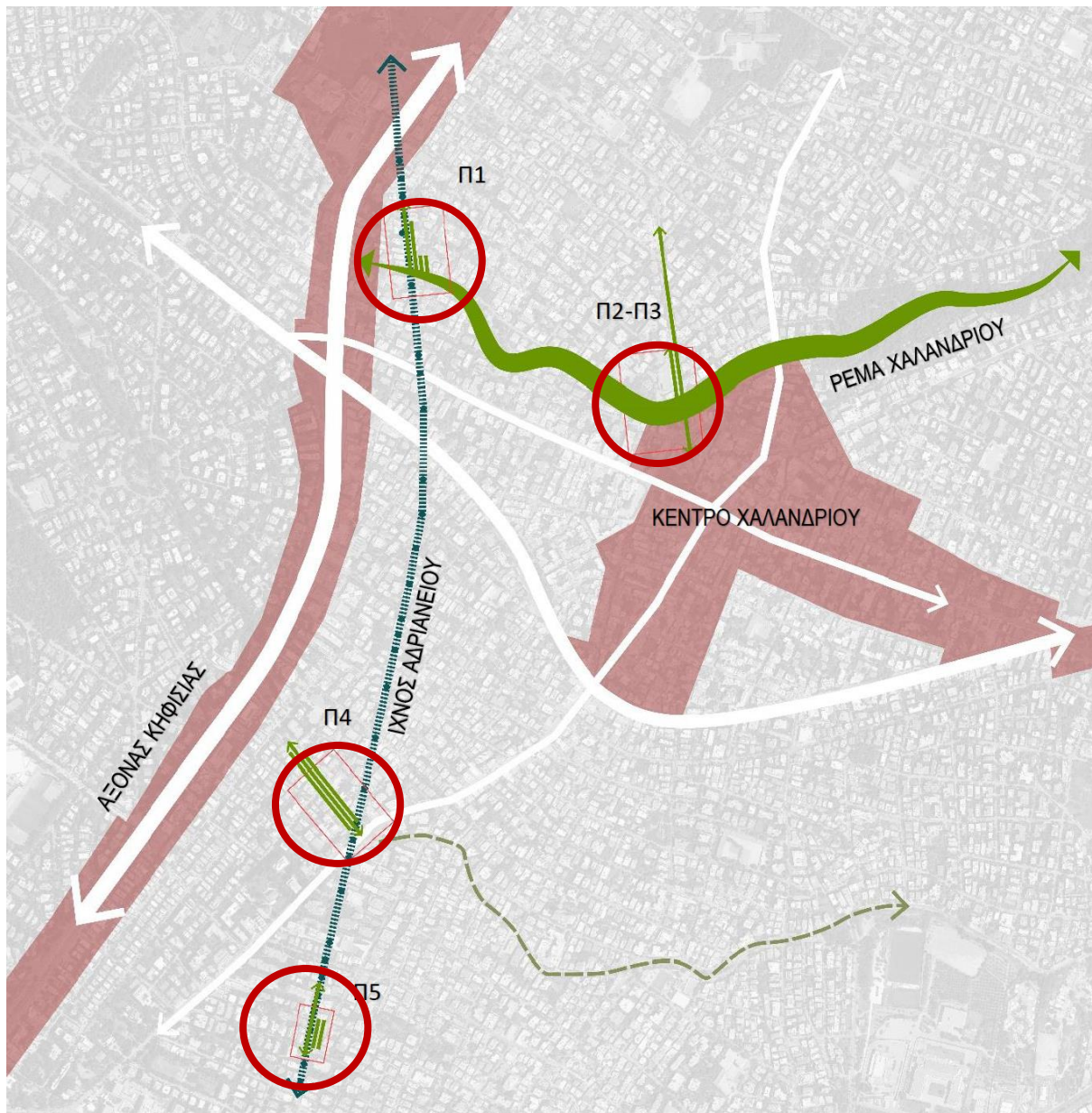
### ΤΟΠΙΚΟ ΑΡΧΕΙΟ

- 350 ιστορικά τεκμήρια και μαρτυρίες
- 1 ψηφιακή πλατφόρμα [www.archalandri.gr](http://www.archalandri.gr)

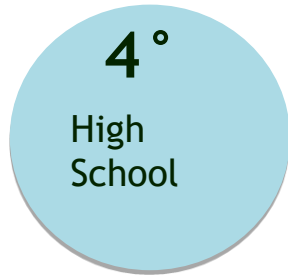
### ΣΥΜΜΕΤΟΧΗ ΚΑΙ ΠΟΛΙΤΙΣΤΙΚΕΣ ΔΡΑΣΕΙΣ ΤΗΣ ΚΟΙΝΟΤΗΤΑΣ

- 2 φεστιβάλ HIDRANT
- 6 δημόσιες εκδηλώσεις
- 18 συμμετοχικές δράσεις στο Χαλάνδρι
- Διαμοιρασμός γνώσης και εμπειρίας
- 8 συμμετοχές σε συνέδρια επιστημονικά και χάραξης πολιτικών

Participatory process - multiple stakeholders from local community

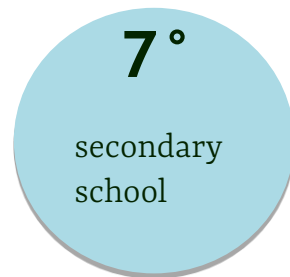


Urban Regeneration - Areas of intervention



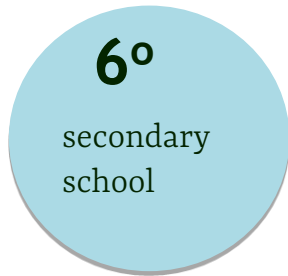
**4°**  
High School

1 department  
23 students  
3 capacity building workshops  
7 participatory design workshops



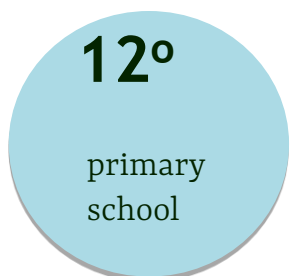
**7°**  
secondary school

18 students  
3 capacity building workshops  
6 participatory design workshops



**6°**  
secondary school

18 students  
2 capacity building workshops  
6 participatory design workshops



**12°**  
primary school

1 section  
17 students  
4 participatory design workshops  
1 final event at the Festival



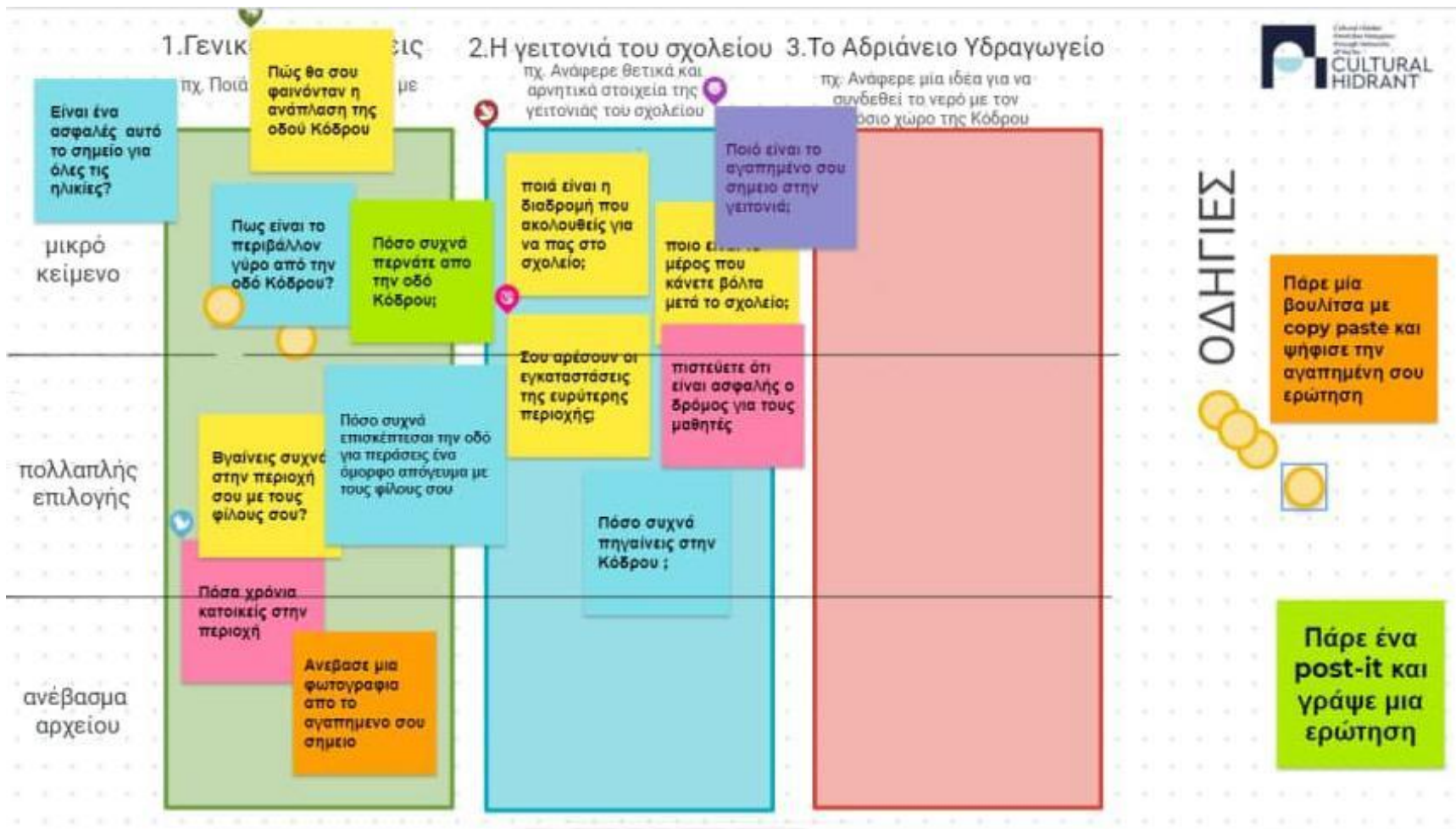
# Cultural HIDRANT **InPlanEd**

## Culture, Participation and the Reclamation of Public Space

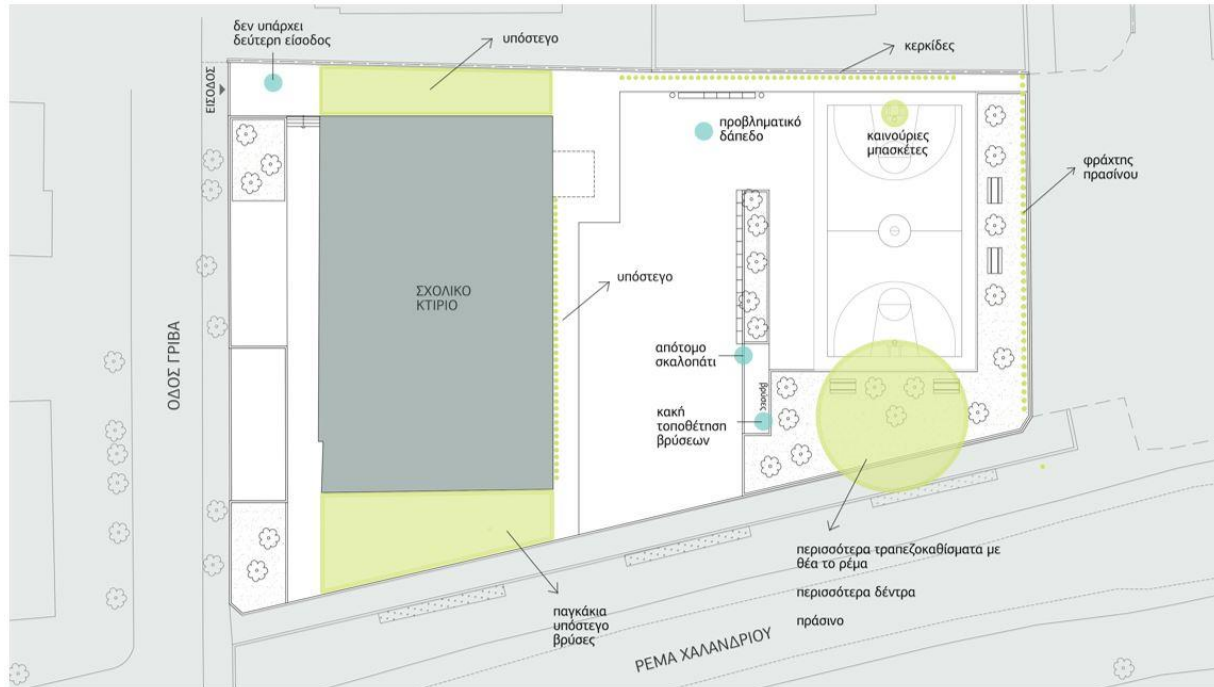
### Participatory workshops with school communities

The first participatory design workshops of Cultural H.ID.R.A.N.T. were implemented between November 2020 - June 2021 in the 7th Secondary School, the 4th High School, the 6th Secondary School and the 12th Primary School of Chalandri.





Area Analysis and Identification



## Area Analysis and Identification

### POSITIVE

- Large courtyard
- Basketball Court
- Enough Green
- Benches
- Plenty of free space

### NEGATIVE

- Lack of second entry.
- Faucets (at a sharp point)
- Poorly maintained floors
- Lack of shelter.
- Lack of greenery in the yard
- Steep terrace in the middle of the yard

### IDEAS

- Field maintenance
- More benches and creating stands
- Replacing faucets and creating new ones
- New plantings
- Green fence next to the field
- To install sheds



ΥΠΟΜΗΝΙΑ	
1	ΑΝΟΙΞΟΝ ΤΟΝ ΠΡΟΣΒΑΣΙΜΟ ΤΗΣ ΠΟΛΗΣ
2	ΕΠΙΣΤΡΟΦΗ ΣΤΟ ΚΑΙΝΟΤΟΜΟ ΚΑΙ ΝΕΟΤΕΤΟ ΚΑΙΝΟΤΟΜΟ
3	ΕΠΙΣΤΡΟΦΗ ΣΤΟ ΚΑΙΝΟΤΟΜΟ ΚΑΙ ΝΕΟΤΕΤΟ ΚΑΙΝΟΤΟΜΟ
4	ΚΑΙΝΟΤΟΜΟ ΚΑΙ ΝΕΟΤΕΤΟ ΚΑΙΝΟΤΟΜΟ ΚΑΙ ΝΕΟΤΕΤΟ ΚΑΙΝΟΤΟΜΟ
5	ΑΝΟΙΞΟΝ ΤΟΝ ΠΡΟΣΒΑΣΙΜΟ ΤΗΣ ΠΟΛΗΣ
6	ΣΤΑΔΙΟΝ ΚΑΙ ΝΕΟΤΕΤΟ ΚΑΙΝΟΤΟΜΟ
7	ΠΡΟΣΒΑΣΙΜΟ ΚΑΙ ΝΕΟΤΕΤΟ ΚΑΙΝΟΤΟΜΟ

ΕΛΛΗΝΙΚΗ ΔΗΜΟΚΡΑΤΙΑ ΔΗΜΟΣ ΧΑΛΑΞΑΡΙΟΥ	
ΜΕΛΟΣ ΕΠΙΤΑΓΗΣ ΔΙΑΣΜΟΣ ΣΧΟΛΙΚΗ ΑΥΛΗΣ 6ΟΥ ΓΥΜΝΑΣΙΟΥ ΧΑΛΑΞΑΡΙΟΥ	
ΣΕ ΠΡΟΤΥΠΟ 6ΟΥ ΓΥΜΝΑΣΙΟΥ ΟΔΟΣ ΓΡΕΒΑ ΔΗΜΟΣ ΧΑΛΑΞΑΡΙΟΥ, ΝΟΜΟΥ ΑΤΤΙΚΗΣ	
ΧΡΟΝΟΣ ΜΕΤΡΗΣΗΣ: ΜΑΡΤΙΟΣ 2021	ΚΥΒΑΝΑΞΕΣΧΟΝ : 1:100
ΦΥΛΑΞΙΣΤΕΣ: ΚΑΤΩΝ ΠΡΟΤΑΣΗΣ	ΑΥ. ΕΞΕΛΕΞΕΤΕ:
ΔΙ. ΜΕΤΡΗΣΕΙΣ	



**InPlanEd**

**thank you!**



Co-funded by  
the European Union

INTEGRATED PLANNING APPROACHES IN HIGHER EDUCATION:  
COLLABORATIVE EDUCATIONAL PROTOTYPE TOWARDS  
INTEGRATED APPROACHES IN THE PLANNING OF INCLUSIVE,  
PEOPLE-CENTRIC AND CLIMATE-RESILIENT CITIES

**commons**space



**commons** / space



**πομπηρα**



**InPlanEd**