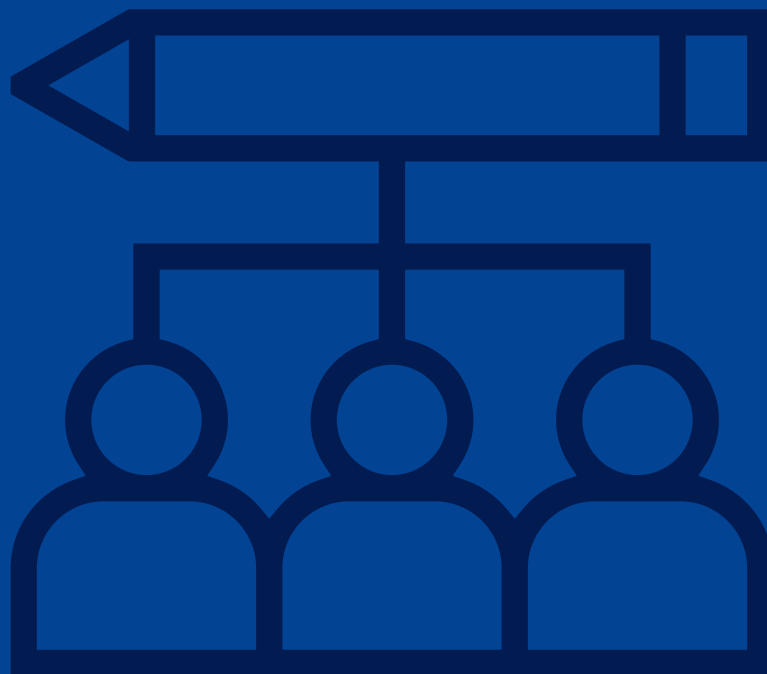


PARTICIPATORY PLANNING



InPlanEd



InPlanEd



Co-funded by
the European Union

PARTICIPATORY PLANNING

Definition

Participatory planning or community-based planning was initially a movement and later a methodology that emphasized the importance of involving local communities in the planning and decision-making process. The origins of participatory turn in planning can be traced back in the 1960s and the wider critique on post-war redevelopment and modernist hierarchical planning processes. It was a movement that affected widely urban planning, urban design, and architecture.

References

- # Albert, M., & Hahnel R. (1992). 'Participatory Planning'. *Science & Society*, 56(1), 39–59.
- # Davidoff, P. (1965). 'Advocacy and Pluralism in Planning'. *Journal of the American Institute of Planners*, 31(4), 331–38. <https://doi.org/10.1080/01944366508978187>.
- # Krivý, M., % Kaminer, T. (2013). 'Introduction: The Participatory Turn in Urbanism'. *FOOTPRINT*, 7(2), 1–6.
- # Sachs, A., Banz, C. & Krohn, M. (2018). *Social Design: Participation and Empowerment*. Zürich: Lars Müller Publishers/Museum für Gestaltung Zürich.