



Photo by [Billy Jo Catbagan](#) on [Unsplash](#)

Εισαγωγή στον  
σχεδιασμό των  
διαφορετικών χώρων

1\_Υπνοδωμάτιο

Επιμέλεια: Φ. Μπουγιατιώτη,  
Επικ. Καθηγήτρια ΕΜΠ

---

# 1\_Υπνοδωμάτιο

## 1.1 Εξοπλισμός

# Βασικός εξοπλισμός

## Κρεβάτι:

Μονό 1,00 x 2,00 m

Διπλό 2,00 x 2,00 m

Ημίδιπλο 1,20 x 2,00 m

Παιδικό 70 x 140 – 170 cm

## Κομοδίνο:

50 x 70, 60 x 70 cm

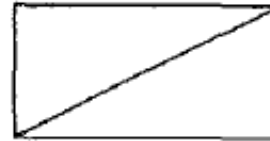
## Ντουλάπα:

Μονή 60 x 60 cm

Διπλή 60 x 120 cm

Κ.Ο.Κ.

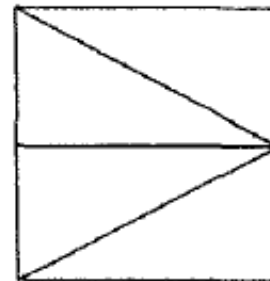
## Bedroom



bed  
100 x 200



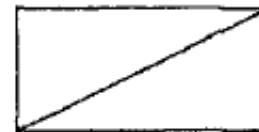
side table  
50 x 70, 60 x 70



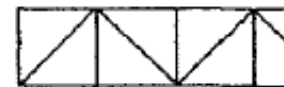
double bed  
100 x 200



twin bed (French bed)  
145 x 200



children's bed  
70 x 140 – 170

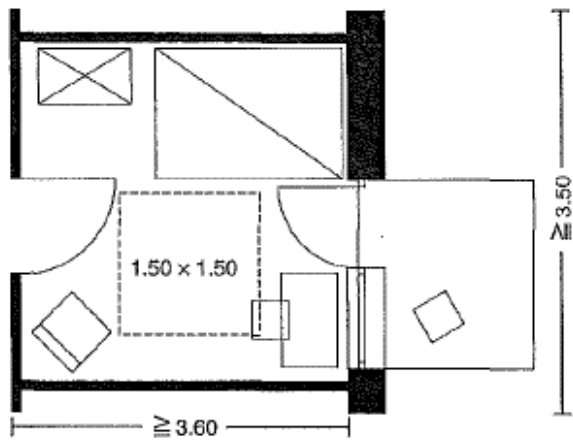


clothes cupboard  
60 x 120

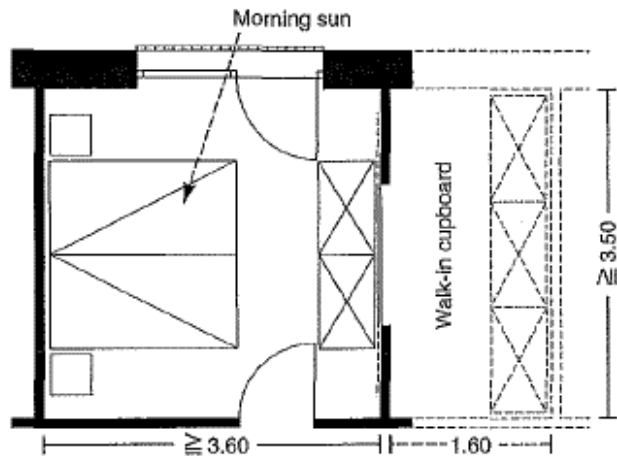
---

# 1\_Υπνοδωμάτιο

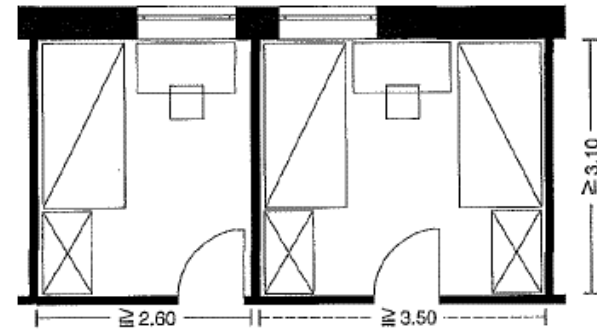
## 1.2 Εργονομικά ζητήματα



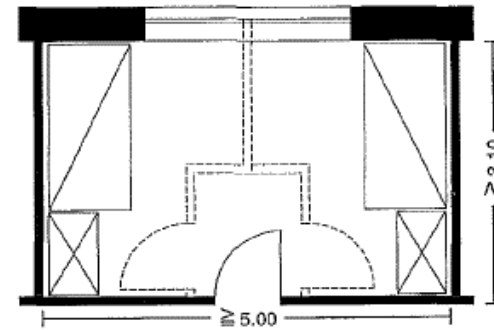
1 Flexibly functional individual room (movement area suitable for a wheelchair)



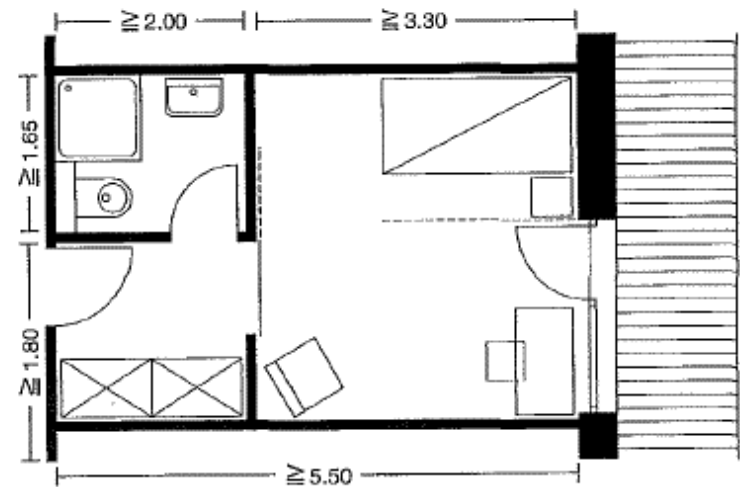
2 (Parents') bedroom with walk-in cupboard extension



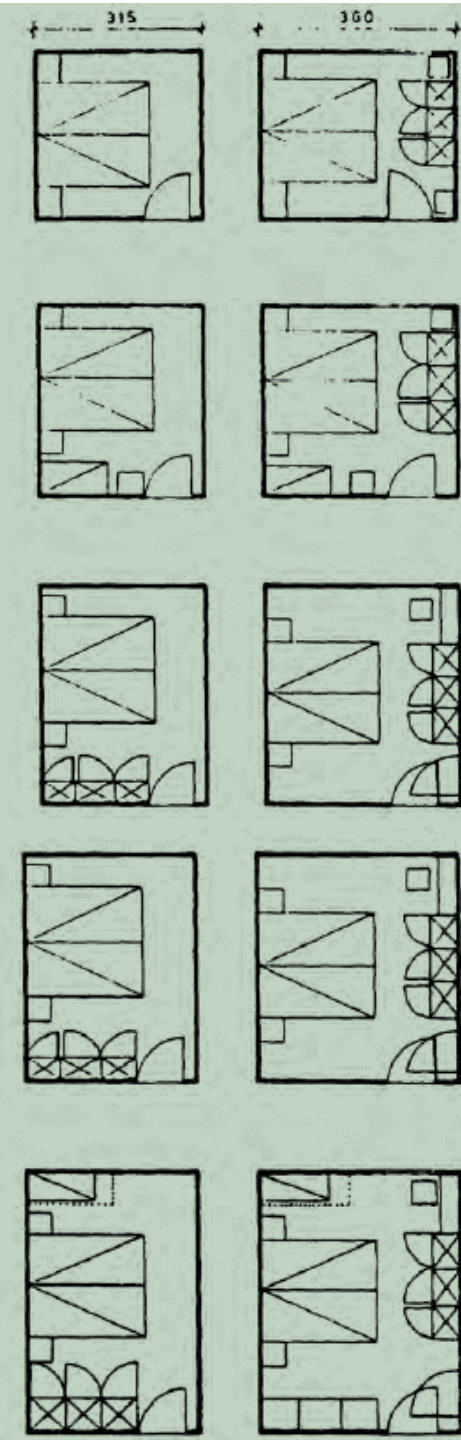
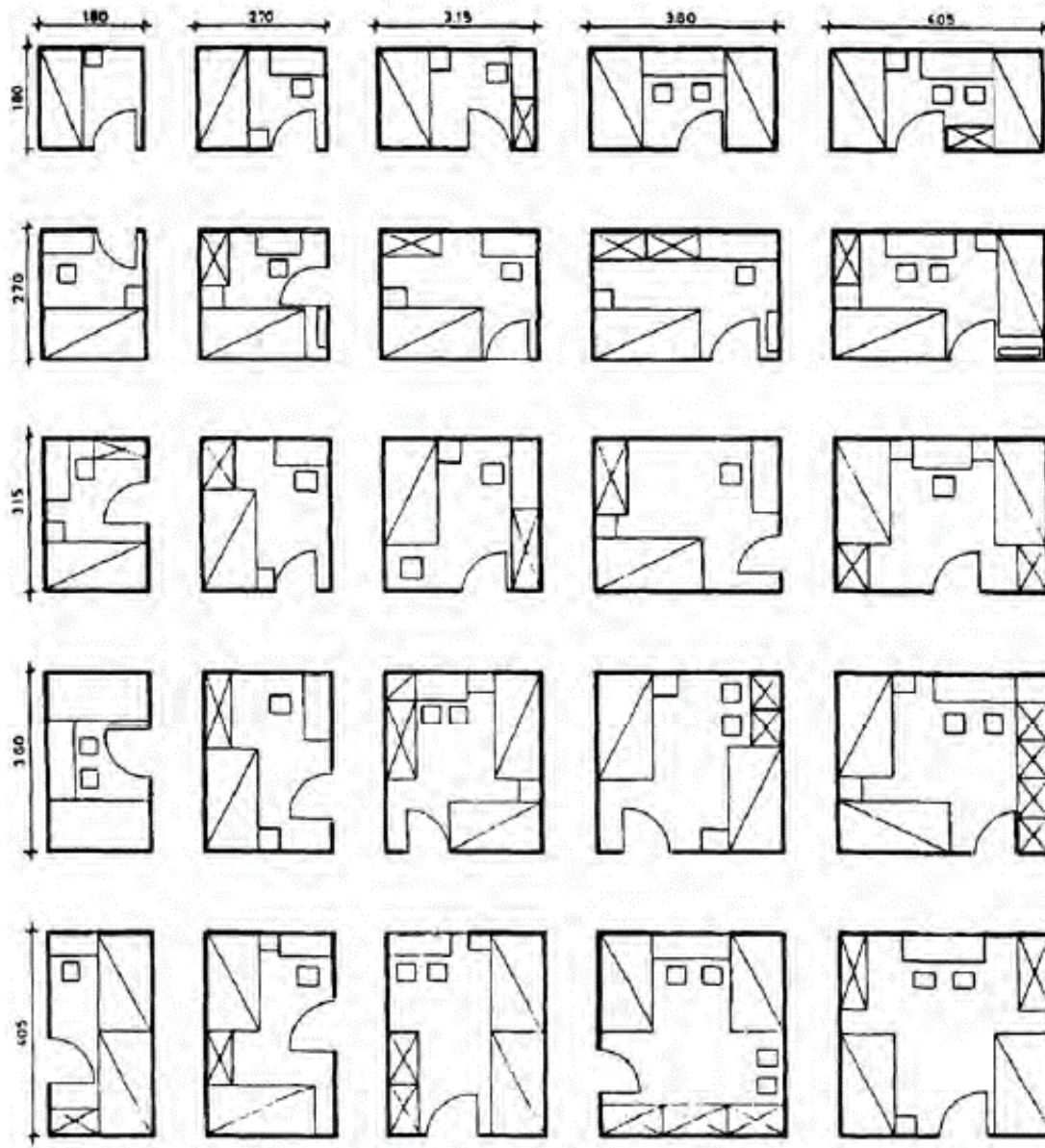
3 Small bedroom and small twin bedroom



4 Twin bedroom (can be partitioned)



5 Small individual area with shower room and cupboard zone



Μπουλαμάκη-Θωμοπούλου, Α. & Γούναλη, Χ. (χ.ε.).  
 Αρχιτεκτονικό Σχέδιο. Β' ΕΠΑΛ.

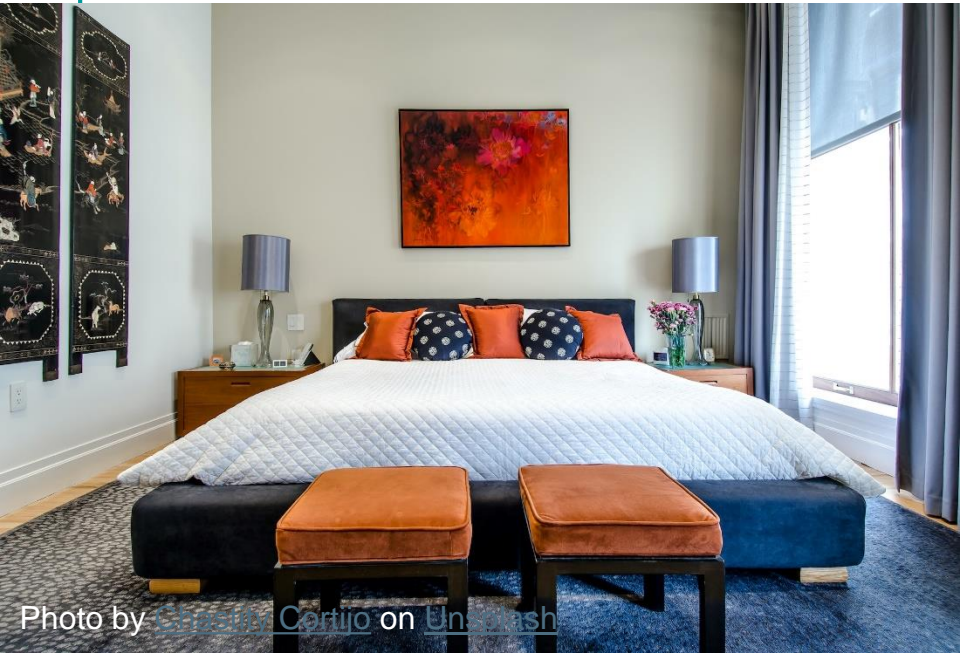


Photo by [Shashita Cortijo](#) on [Unsplash](#)



Photo by [Josh McLove](#) on [Unsplash](#)

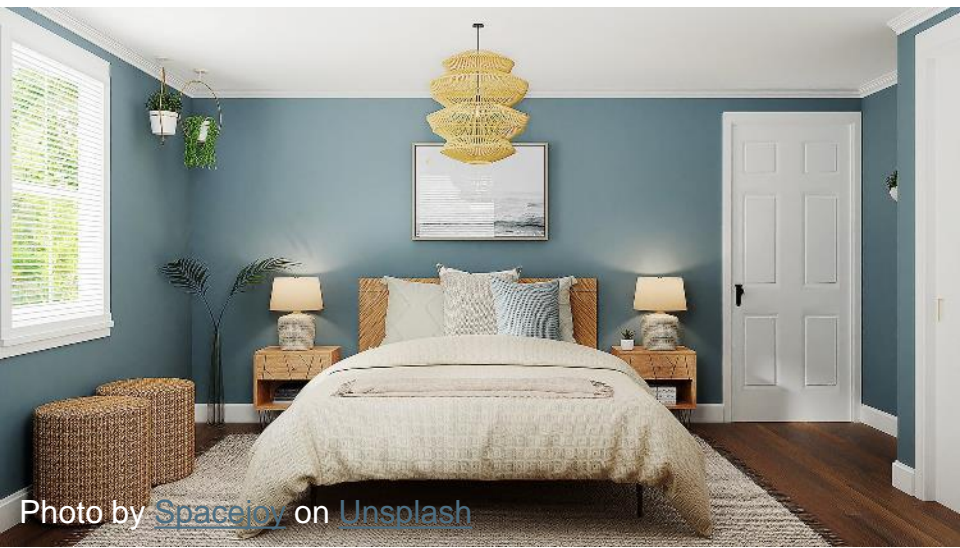


Photo by [Spacejoy](#) on [Unsplash](#)



Photo by [Sidekix Media](#) on [Unsplash](#)

---

# 1\_Υπνοδωμάτιο

## 1.3 Σύντομη ιστορική αναδρομή





Υπνοδωμάτιο στη Βικτωριανή Αγγλία (Μουσείο)

<https://www.flickr.com/photos/thedarkthing/5364313611/in/photostream/>



Υπνοδωμάτιο στην Πολυκατοικία της Μασσαλίας (Unite d' Habitation, Le Corbusier (1947-1953))



Υπνοδωμάτιο σε κατοικία (House VI), Peter Eisenman (1975)

---

# 1\_Υπνοδωμάτιο

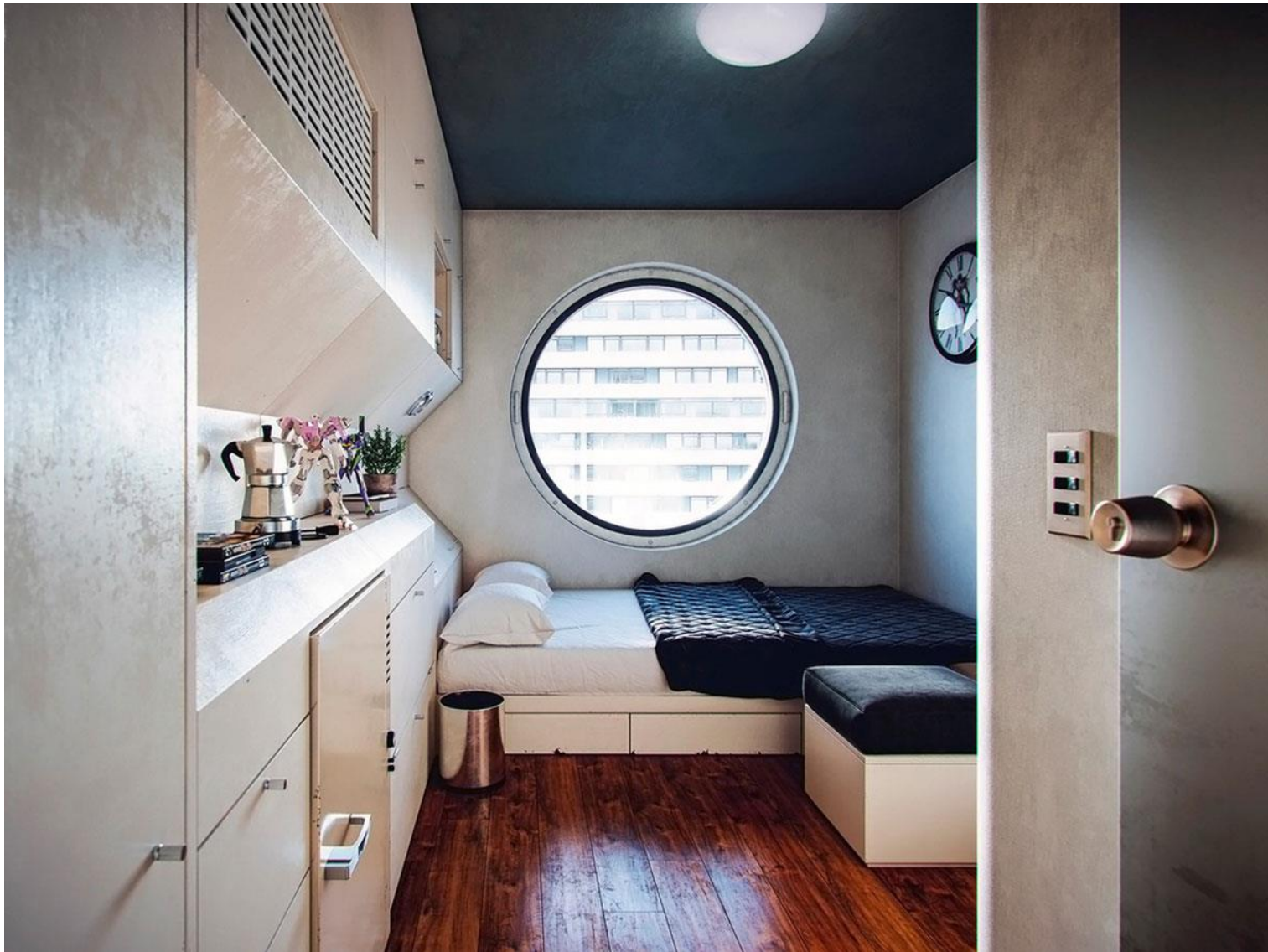
## 1.4 Παραδείγματα ελάχιστης και μέγιστης επιφάνειας

minimum...

<https://www.londonxlondon.com/best-capsule-hotels-london/>



<https://www.uniqhotels.com/the-pod-singapore>



Nakagin Capsule Tower, Kisho Kurokawa (1972)

<https://www.iconichouses.org/icons-at-risk/nakagin-capsule-tower/>



Lego Apartment, Barbara Appoloni

<https://barbaraappoloni.com/lego-apartment/>



Carmel Place / My Micro NY Tower, Narchitects

<https://www.dezeen.com/2016/02/01/carmel-place-micro-apartment-tower-new-york-city-narchitects-photos/>



maximum...



[https://www.archdaily.com/968291/more-than-just-a-wardrobe-15-examples-of-walk-in-closets?ad\\_medium=gallery](https://www.archdaily.com/968291/more-than-just-a-wardrobe-15-examples-of-walk-in-closets?ad_medium=gallery)



[https://www.archdaily.com/968291/more-than-just-a-wardrobe-15-examples-of-walk-in-closets?ad\\_medium=gallery](https://www.archdaily.com/968291/more-than-just-a-wardrobe-15-examples-of-walk-in-closets?ad_medium=gallery)



[https://www.archdaily.com/968291/more-than-just-a-wardrobe-15-examples-of-walk-in-closets?ad\\_medium=gallery](https://www.archdaily.com/968291/more-than-just-a-wardrobe-15-examples-of-walk-in-closets?ad_medium=gallery)



Photo by [Cameron Smith](#) on [Unsplash](#)

Εισαγωγή στον  
σχεδιασμό των  
διαφορετικών χώρων

---

2\_Λουτρό - WC

Επιμέλεια: Φ. Μπουγιατιώτη,  
Επικ. Καθηγήτρια ΕΜΠ

---

## 2\_Λουτρό - wc

### 2.1 Εξοπλισμός

# Βασικός εξοπλισμός

## Μπανιέρα ή Ντουζιέρα:

Μπανιέρα 0,75 x 1,70 m

Ντουζιέρα 0,80 x 0,80 m

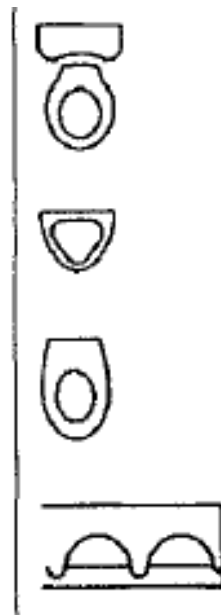
## Νιπτήρας:

Μονός

Διπλός

## Λεκάνη:

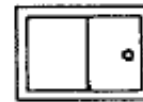
38 x 70 cm



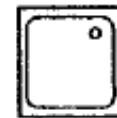
## Bathroom



bath  
75 x 170,  
85 x 185



small bath  
70 x 105,  
70 x 125



shower 80 x 80,  
90 x 90, 75 x 90

symbol  
scale 1:100

symbol scale 1:50

WC 38 x 70



washbasin 50 x 60,  
60 x 70

urinal 35 x 30



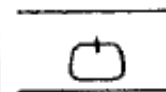
2 washbasins

bidet 38 x 60

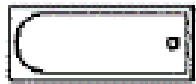


double washbasin  
60 x 120, 60 x 140

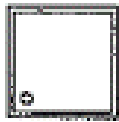
urinal stand



vanity unit 45 x 30



bath



shower tray



vanity unit, hand washbasin



sitting washbasin



urinal



urinal with automatic flushing



WC, floor-mounted



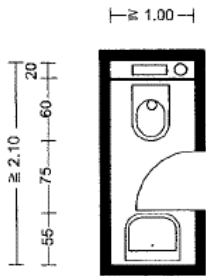
WC, wall-mounted

---

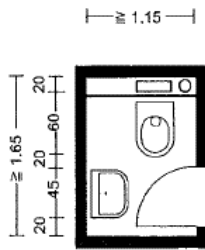
## 2\_Λουτρό - wc

### 2.2 Εργονομικά ζητήματα

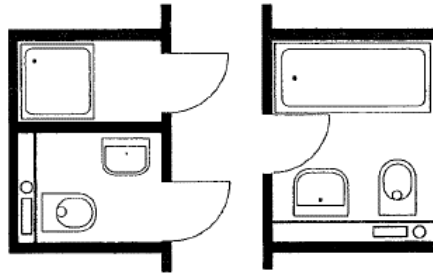




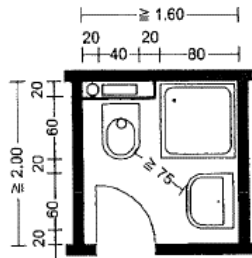
3 WC with washbasin



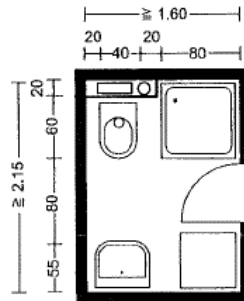
4 WC with handbasin



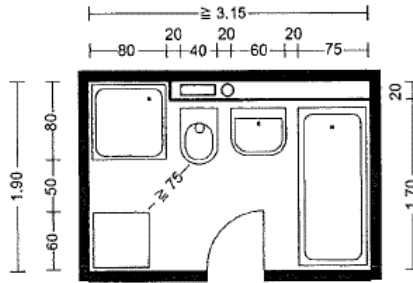
9 Functional split of the bathroom into separate rooms



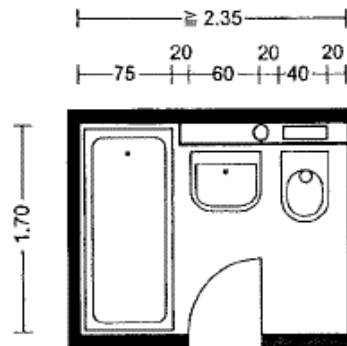
5 Space required for shower



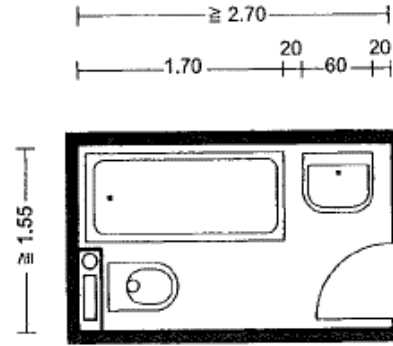
6 Shower room with washing machine



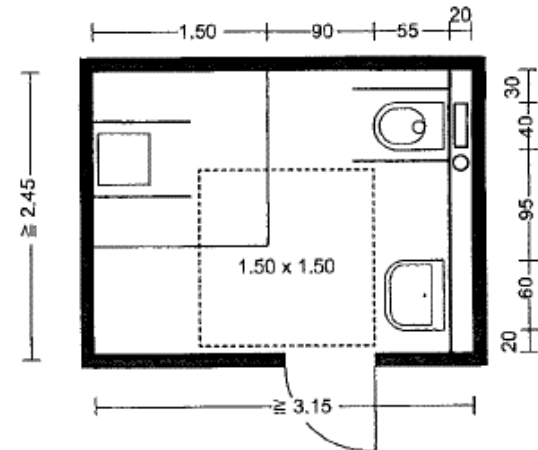
10 Full bathroom with space for washing machine



7 Space required for bathtub



8 Full bath



11 Accessible bathroom with showering space

---

## 2\_Λουτρό - wc

### 2.3 Σύντομη ιστορική αναδρομή



Τουαλέτες στη Έφεσο, Τουρκία



Τοιχογραφίες σε αρχαίο ρωμαϊκό λουτρό



Ρωμαϊκό λουτρό

<https://www.wallpaperflare.com/bath-united-kingdom-the-roman-baths-aqua-sulis-hot-springs-wallpaper-eisyc>



Λουτρό, Villa Savoye, Le Corbusier (1928-1931)

<https://artreview.com/may-2015-opinion-sam-jacob/>





Le Corbusier (1928-1931), Λουτρό, Villa Savoye & Molitor Building

<https://www.phaidon.com/agenda/architecture/articles/2019/january/21/visit-the-apartment-where-le-corbusier-changed-architecture/>

---

## 2\_Λουτρό - wc

### 2.4 Παραδείγματα ελάχιστης και μέγιστης επιφάνειας



<https://www.uniqhotels.com/the-pod-singapore>





Lego Apartment, Barbara Appoloni

<https://barbaraappoloni.com/lego-apartment/> Για περισσότερα: <https://youtu.be/juWaO5TJS00>



Photo by [Dillon Shook](#) on [Unsplash](#)

## Εισαγωγή στον σχεδιασμό των διαφορετικών χώρων

---

### 3\_Γραφείο στο σπίτι

Επιμέλεια: Φ. Μπουγιατιώτη,  
Επικ. Καθηγήτρια ΕΜΠ

---

# 3\_Γραφείο

## 3.1 Εξοπλισμός

# Βασικός εξοπλισμός

## Γραφείο:

Μονό 1,00 x 2,00 m

Διπλό 2,00 x 2,00 m

Ημίδιπλο 1,20 x 2,00 m

Παιδικό 70 x 140 – 170 cm

## Βιβλιοθήκη:

50 x 70, 60 x 70 cm

## Ντουλάπα:

Μονή 60 x 60 cm

Διπλή 60 x 120 cm

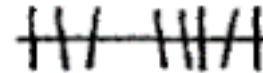
Κ.Ο.Κ.

.

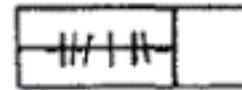
## Clothes storage



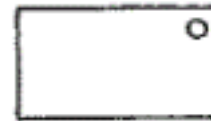
hook spacing  
15–20 cm



hanging rail



clothes and linen  
cupboard 50 x 100–180

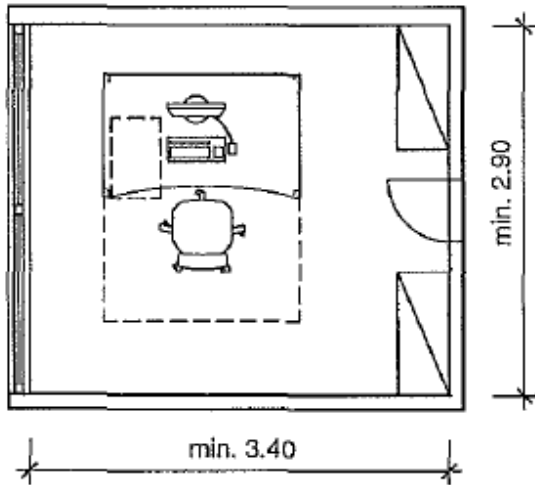


desk  
70 x 130 x 78  
80 x 150 x 78

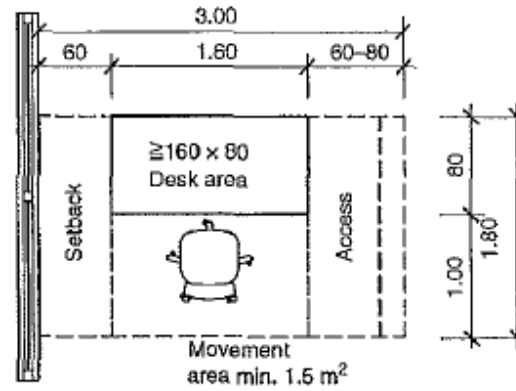
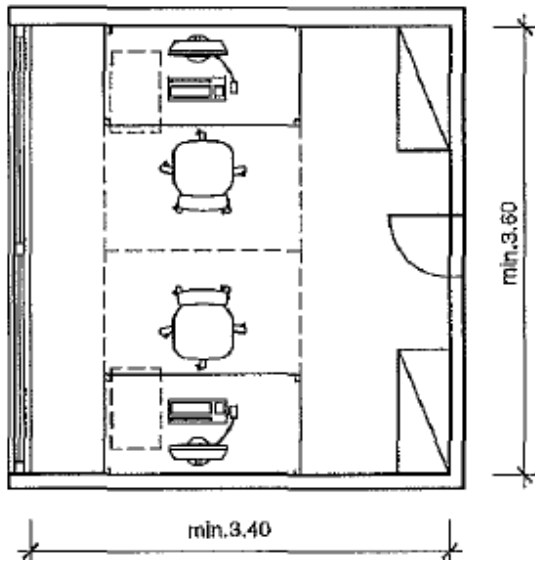
---

# 3\_Γραφείο

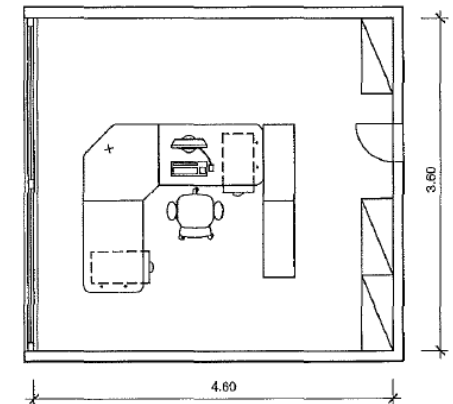
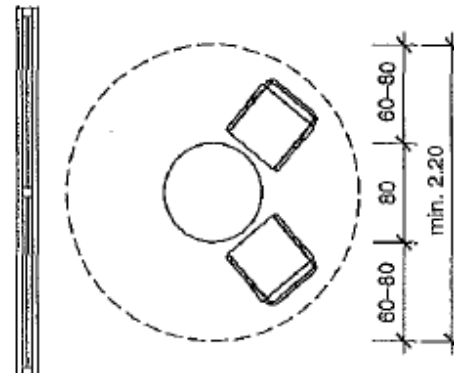
## 3.2 Εργονομικά ζητήματα



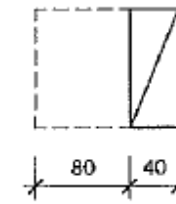
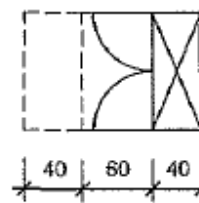
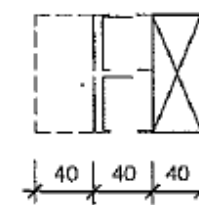
**1** Example: single office



**2** Minimum space requirement for a single workstation



**6** Example: office management



---

## 3\_Γραφείο

### 3.3 Παραδείγματα ελάχιστης και μέγιστης επιφάνειας



<https://www.uniqhotels.com/the-pod-singapore>





House NA / Sou Fujimoto Architects



Apartamento Loloite / Urban Ode Arquitetura e Urbanismo | Apartamento Buenos Aires / Ultra



Apartamento LR / UNIC Arquitetura



Hawthorn House / Edition Office