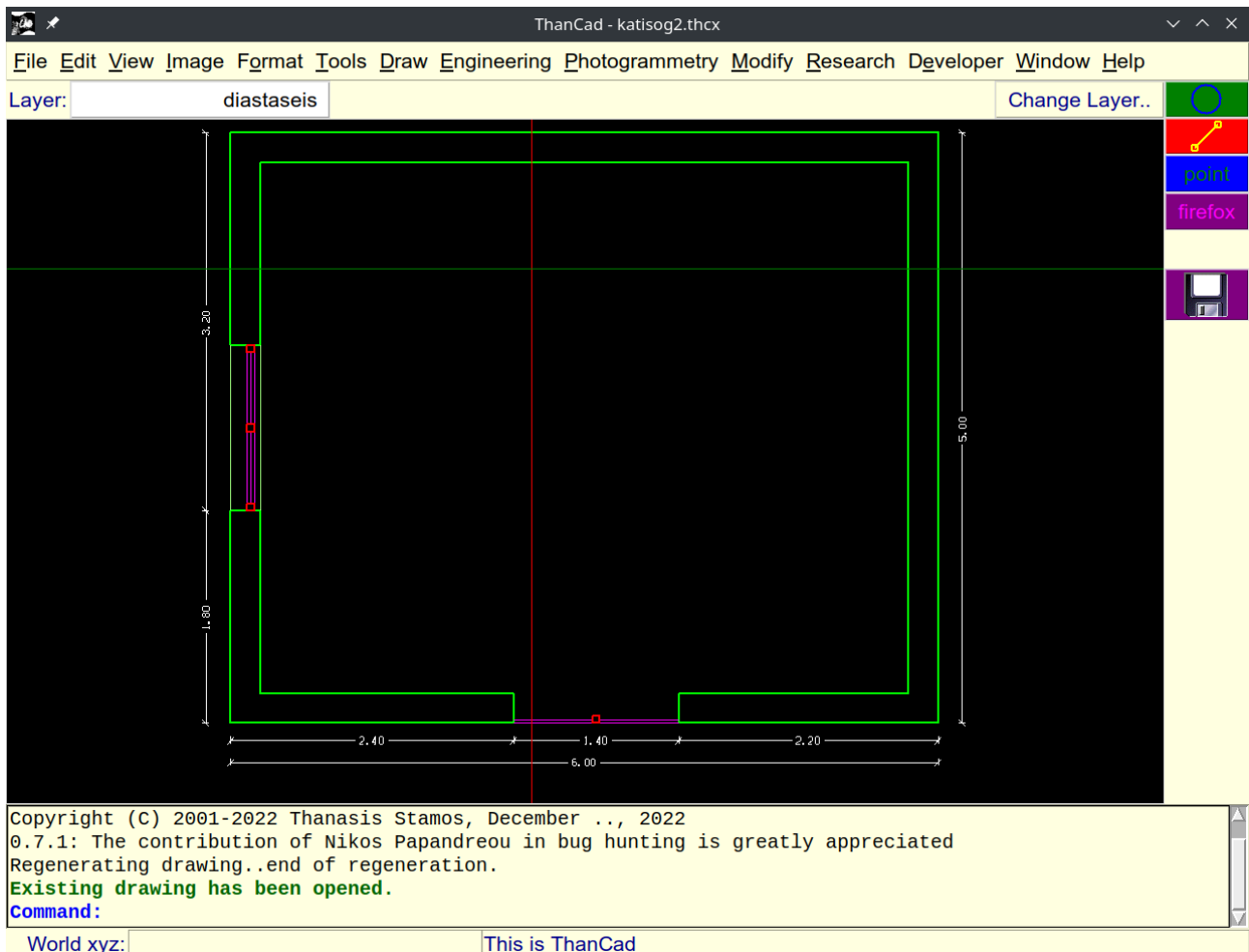


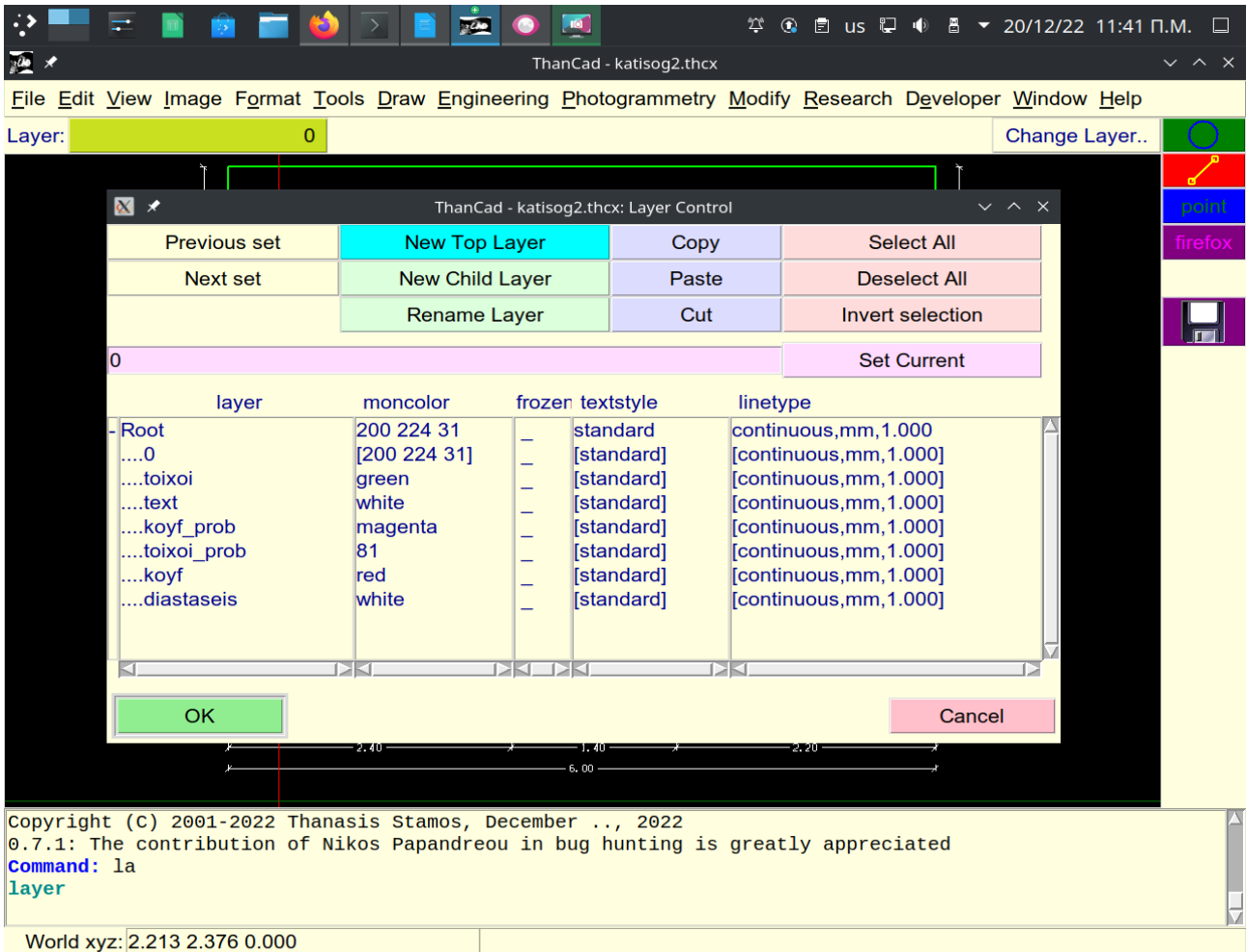
Insert an image in an existing drawing

Images are very important in computer aided design. ThanCad has extensive support for many types of images, especially for mapping. ThanCad does not save the images inside the drawing file (.thcx). Usually the image files are fairly large (100MB and more) and would unnecessarily increase the size of the .thcx file. Instead, ThanCad saves the location (pathname) of the image file in the computer (for example /home/user/myimage.png). If the drawing is closed and then reopened, ThanCad tries to find the image in the saved pathname. If it does not find the image (perhaps the image file was deleted or moved to another directory), ThanCad draws the image frame, without the content of the image.

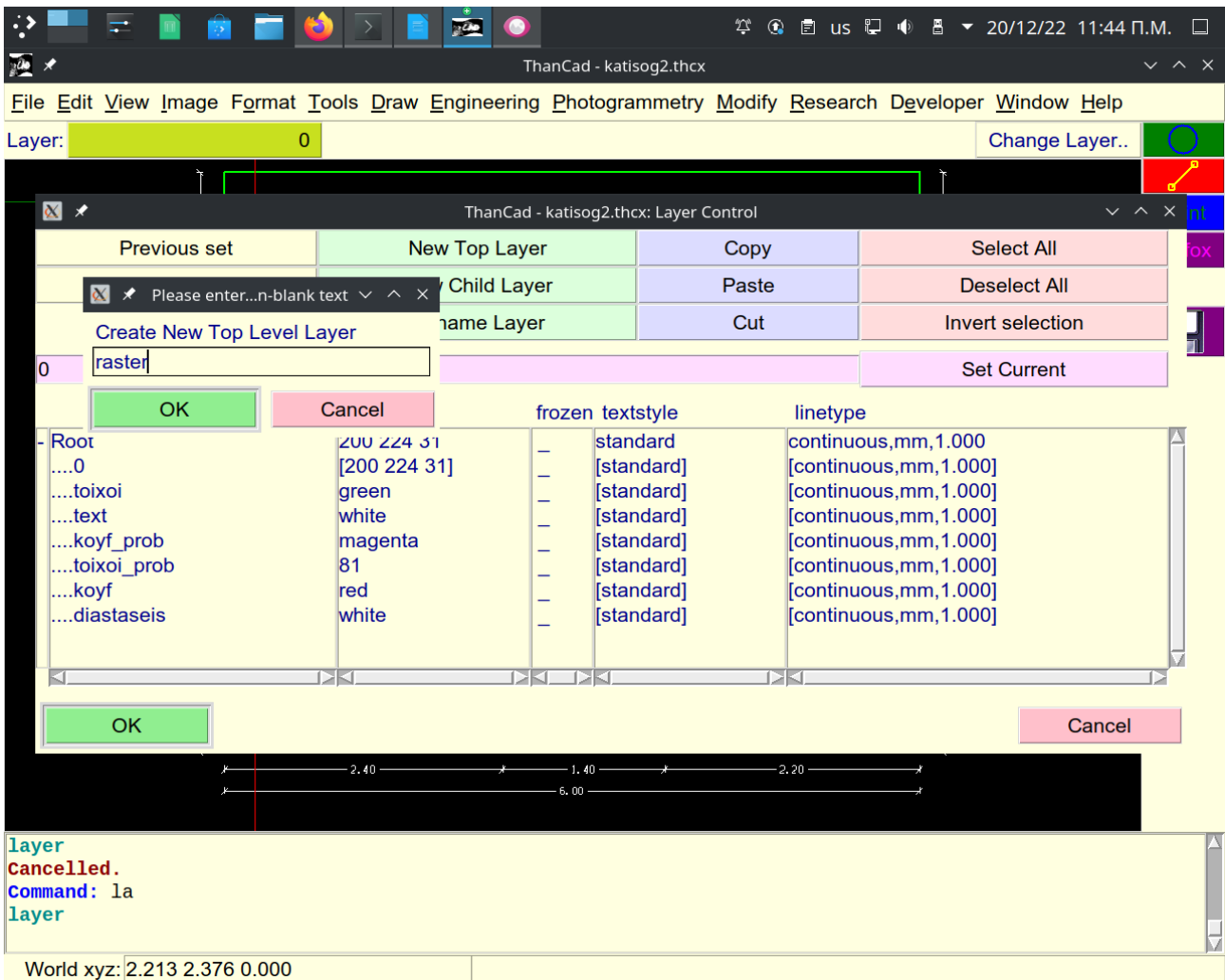
The simplest way to insert an image is to define the insertion point and the image width in user data units, either with the mouse or by typing explicit numbers. In this example we start with an existing drawing:



At first we will create a new layer "raster" to insert the image into. Type "layer" at the command prompt (it can be abbreviated to "la") and press enter, or click "layer" in the "Format" menu. On the main Layer window that appears, click the "New Top Layer" button:

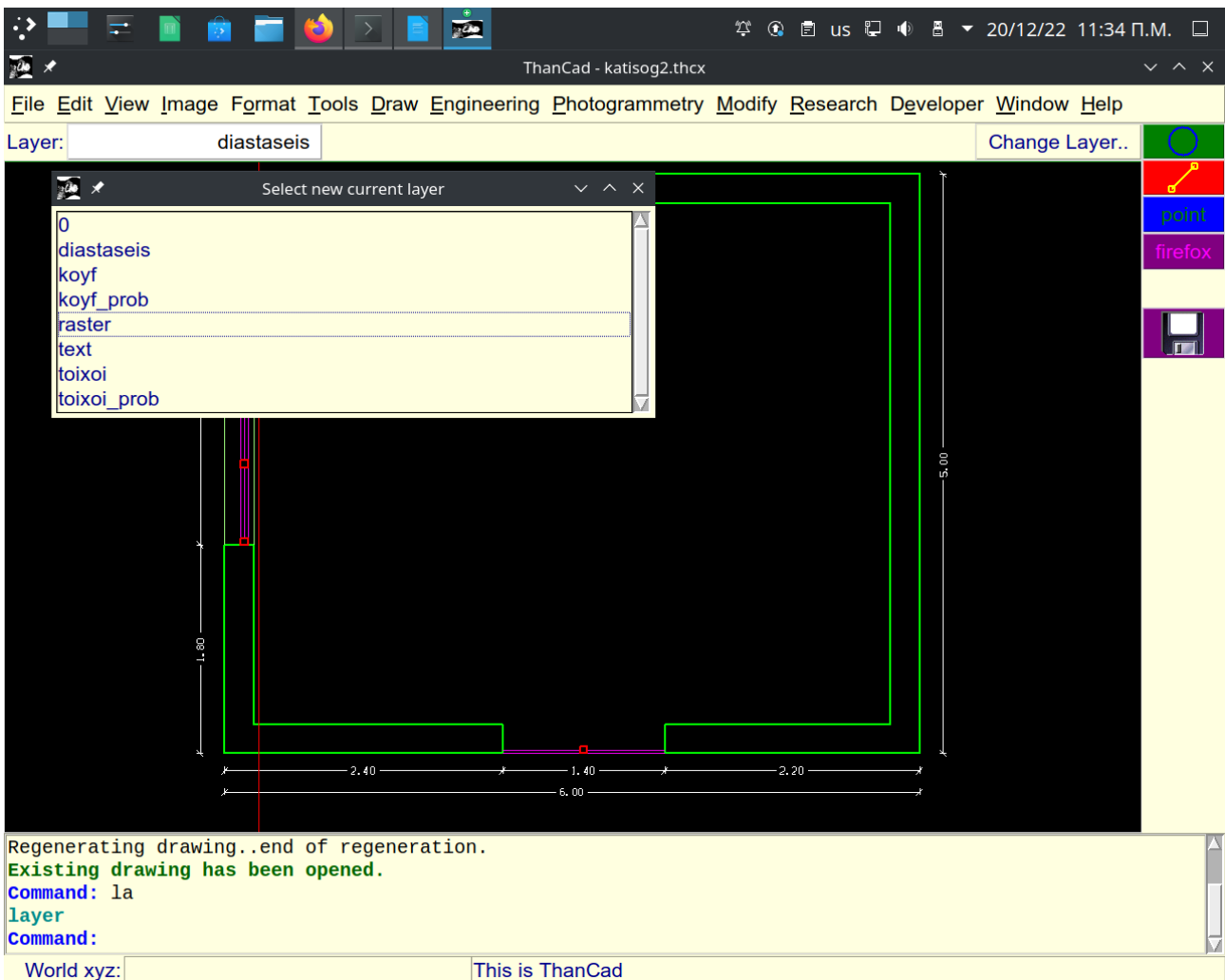


A dialog window is displayed. Type the name of the new layer ("raster"), and click the "OK" button:

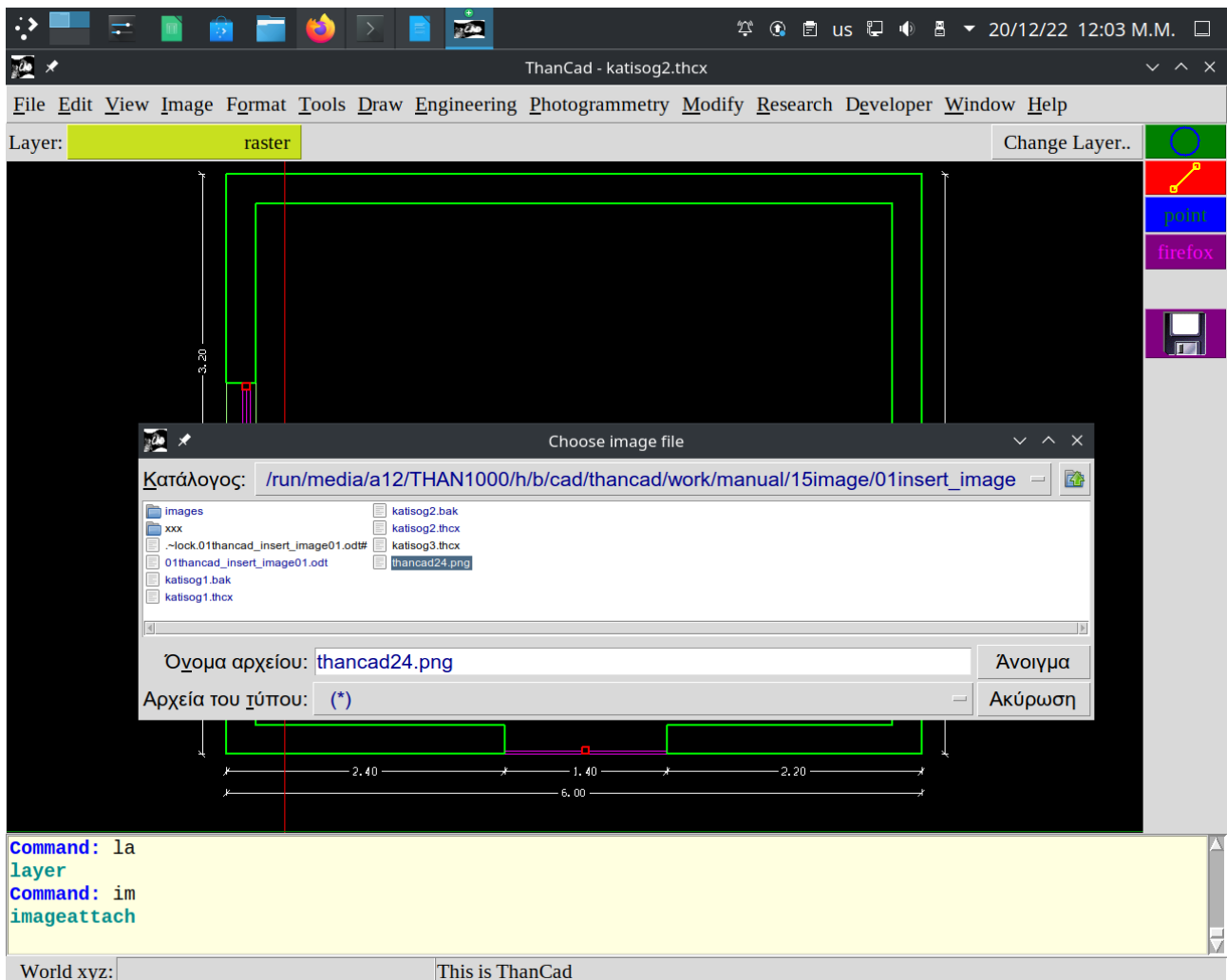


Click the "OK" button on the main layer window to save the layer, and return to the drawing.

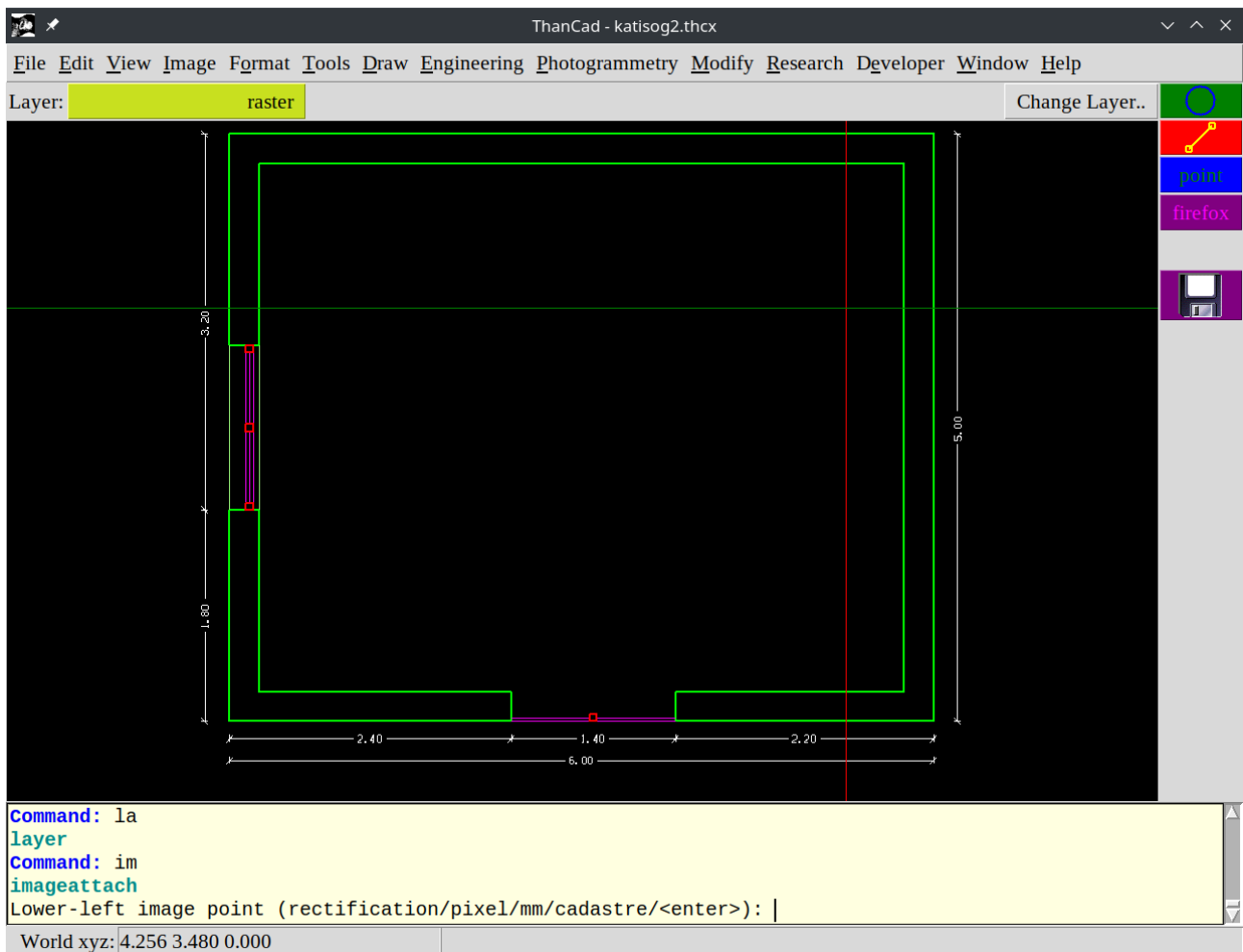
Make "raster" the current layer, by clicking on the upper left button (shown as dark green in the screenshot below), right after the label "Layer:". A layer selection windows appears. click on "raster" to make it the current layer.



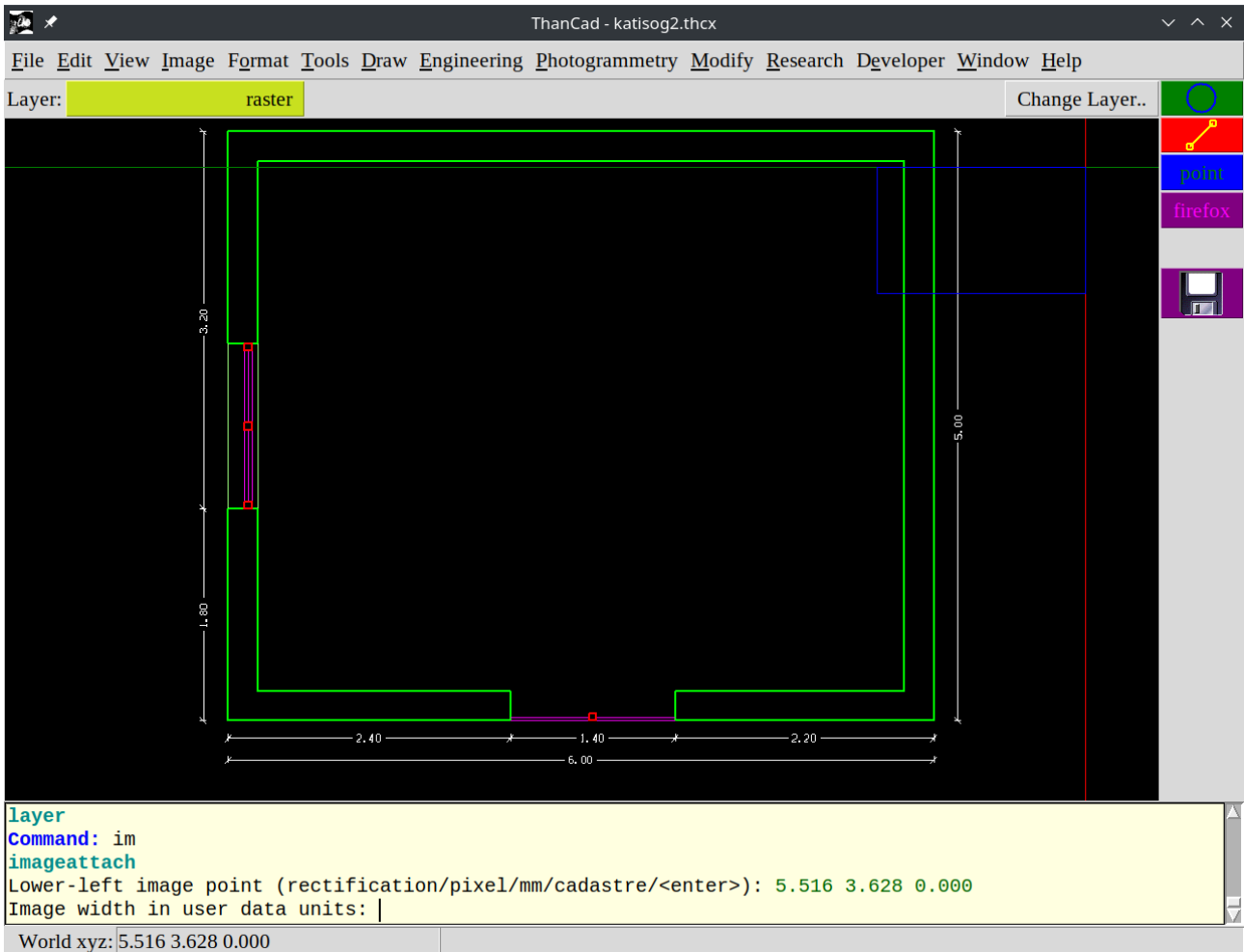
We will now insert the icon of ThanCad in the drawing. Type "imageattach" at the command prompt (it can be abbreviated to "im") and press enter, or click "Insert Raster Image" in the "Image" menu. An image file selection dialogue appears. Click on the file "thancad24.png" and press enter on the keyboard, or double-click on the file "thancad24.png":



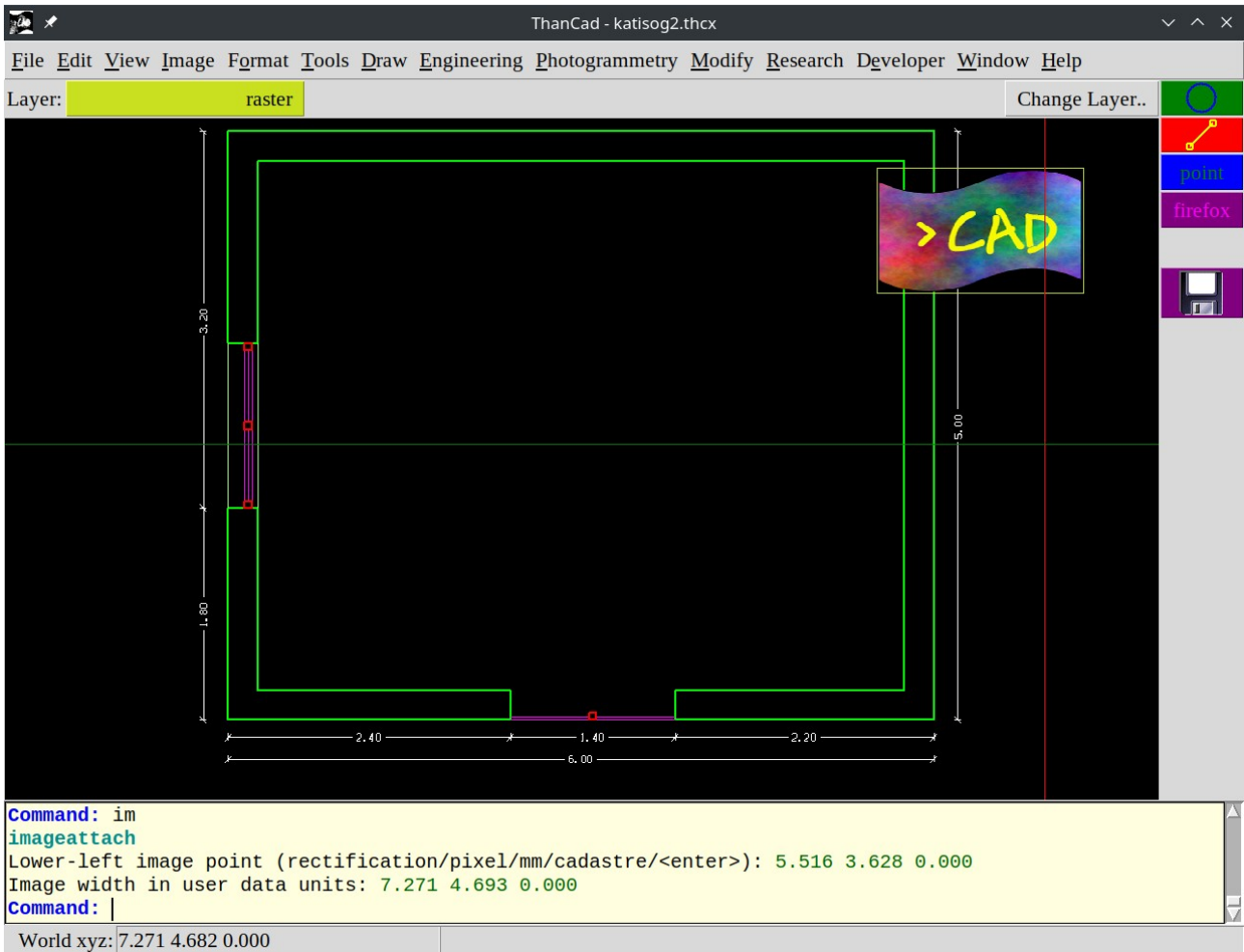
ThanCad now prompts you to enter the position of the image in the drawing. In particular it asks for the insertion point where the lower left corner of the image is going to be. Click somewhere on the upper right part of the drawing as shown in the screenshot below. Alternatively, you can type the coordinates of the insertion point.



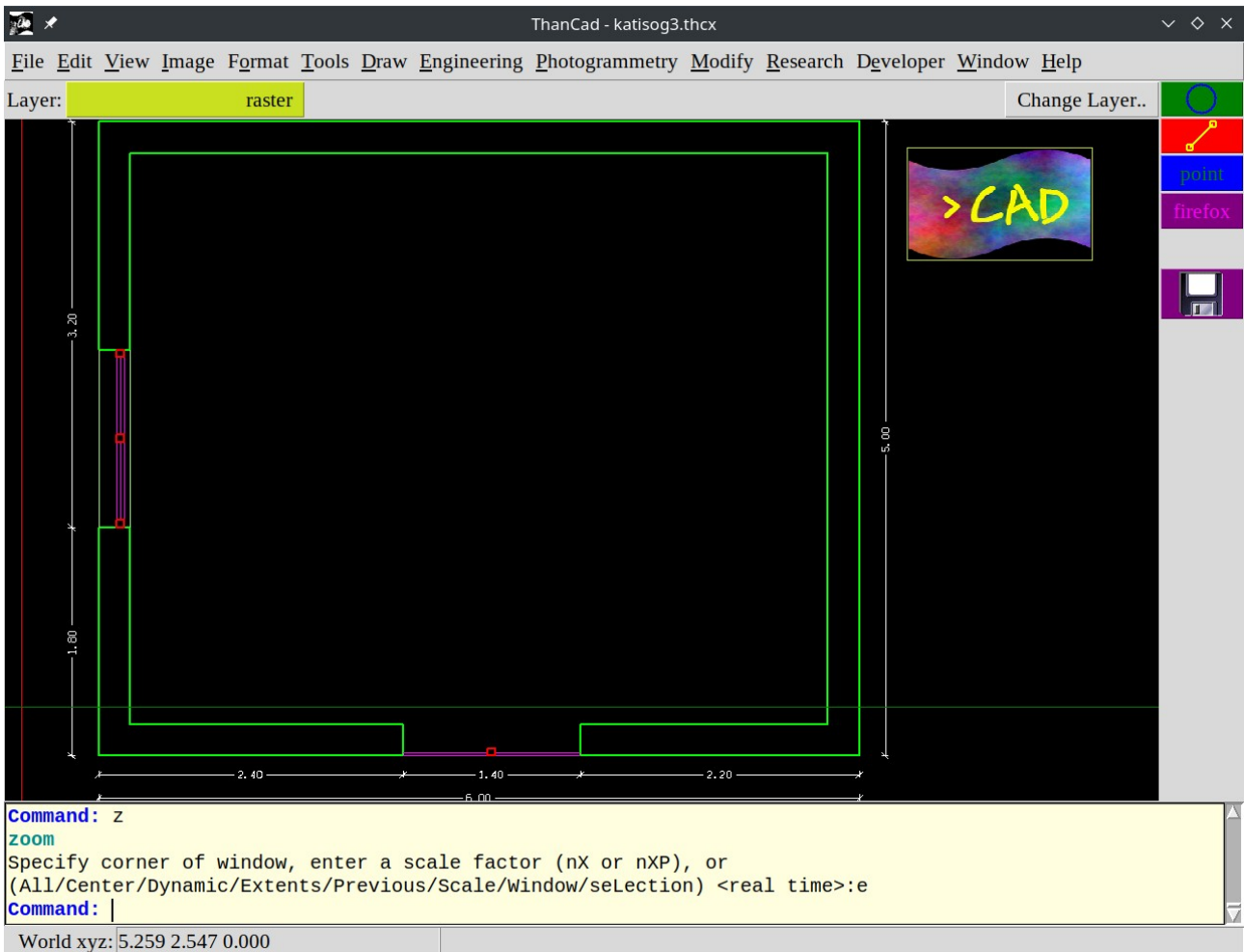
ThanCad now asks for the width of the image, in user data units. Either type the width of the image, or use the mouse to show the size of the image. As you move the mouse a blue rectangular frame is shown, where the image is going to be drawn. Move the mouse to roughly the position shown in screenshot below, and click on the mouse button.



The image is inserted on the drawing. Notice that the image is on top of the existing elements (lines, dimensions etc) the drawing, and it partially covers them. This can be corrected by lowering the draw order ("draworder" attribute) of the layer the image belongs to. Also notice the yellow rectangle which encloses the image. This is the image frame. The image frame can be turned off.



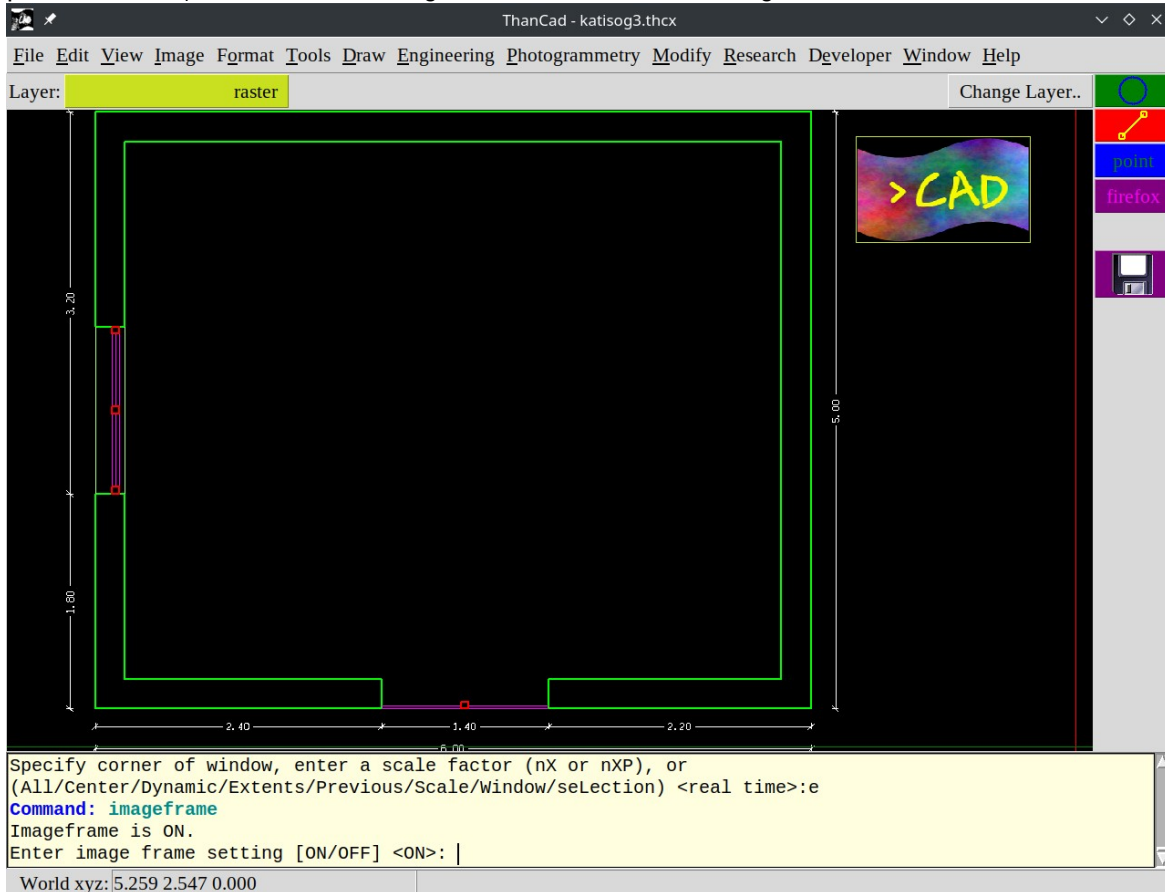
The image is an ordinary ThanCad element and can be moved so that it does not cover the existing elements.



The image can also be copied, scaled, erased. Currently the image can not be fully rotated; the lower left corner of the image frame is rotated, but content of the images is not.

The snap points "endpoint", "midpoint", "intersection", "nearest" are valid for the image frame.

The image frame can be turned off. Type "imageframe" at the command prompt and press enter, or click "Image frame" in the "Image" menu:



Type "off" and press enter. The image frame disappears. However, now the image can not be selected (for example to erase it), and snap points do not work.

