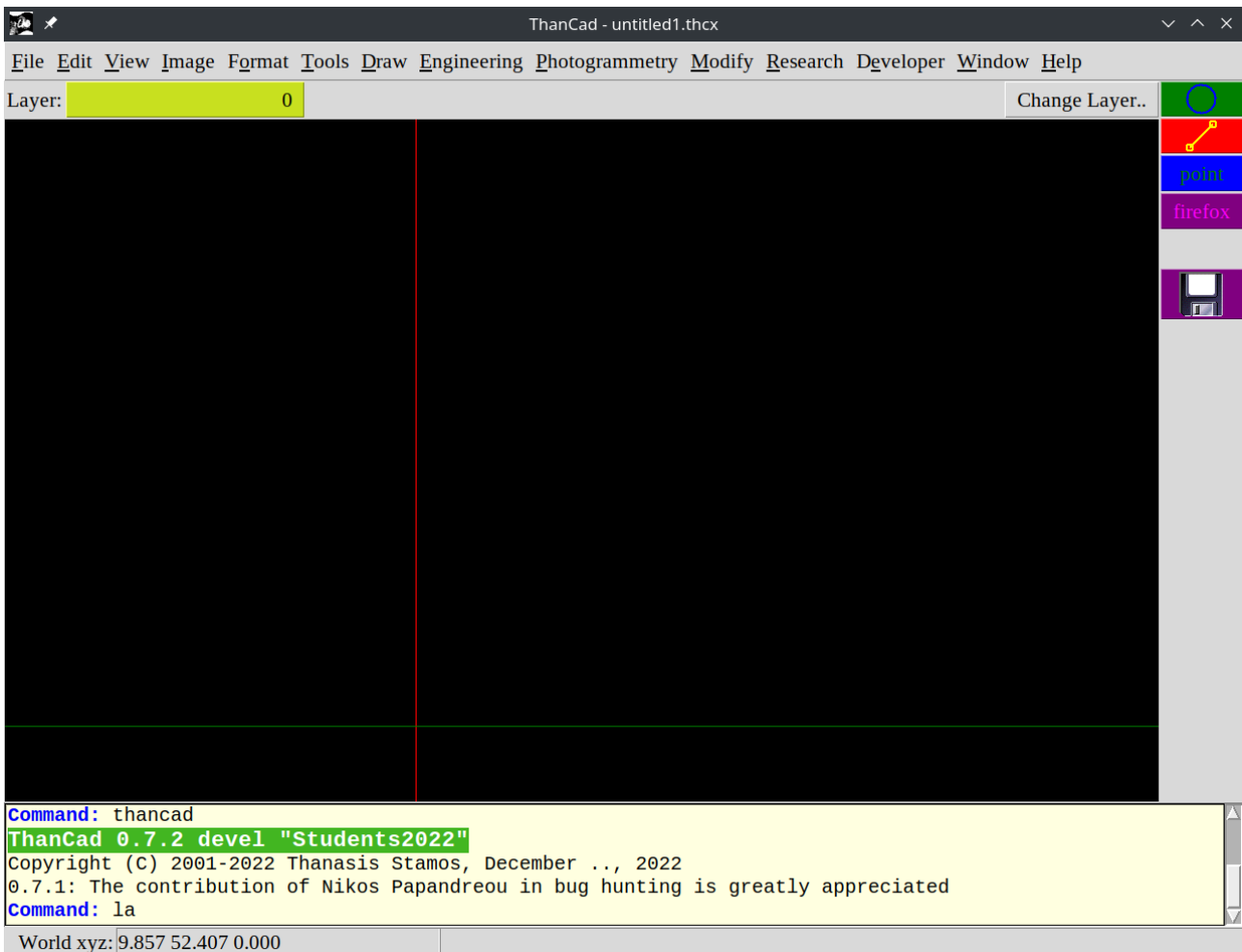


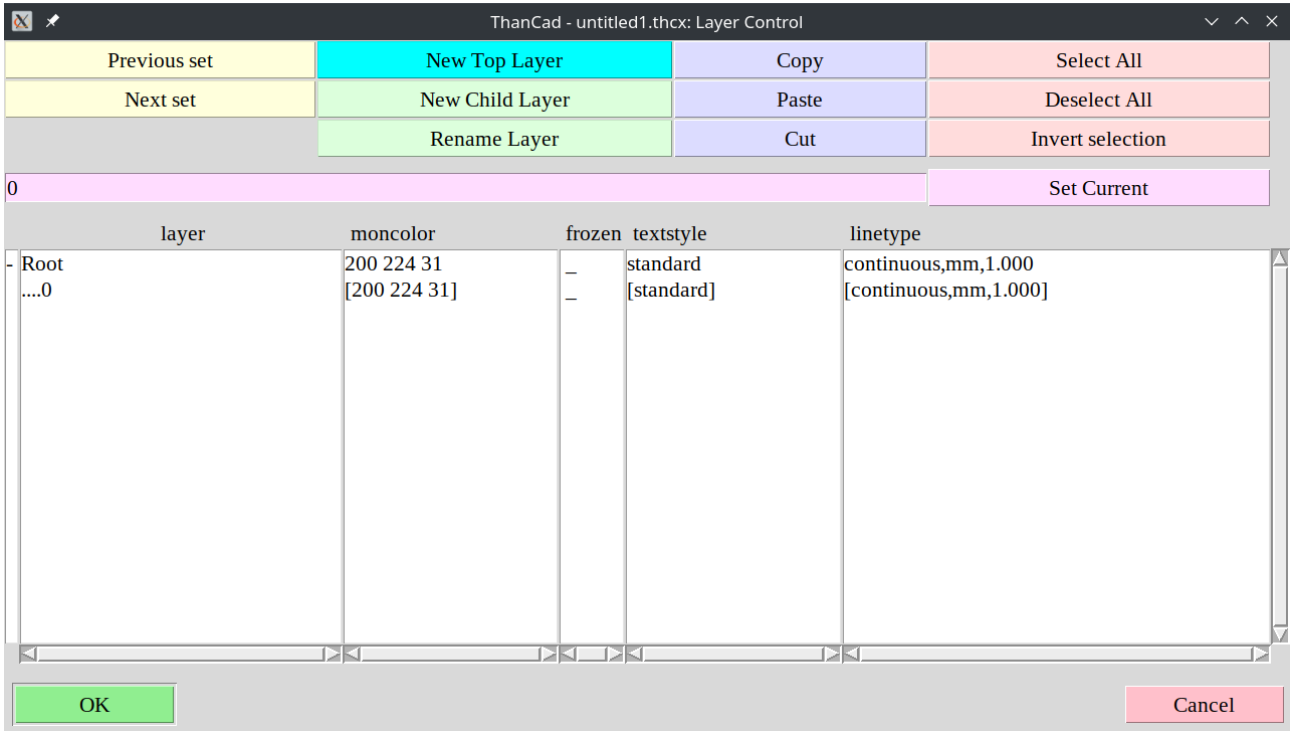
## Create a layer and set the color of the layer

In ThanCad every element (line, circle, arc, text, etc) belongs to exactly one layer. The element always inherits the attributes (color, pen thickness, line type etc) from the layer it belongs to. An element can not have individual attributes. Experience shows that individual element attributes almost always lead to mistakes. The use of element individual attributes is somewhat analogous to the use of "goto" in a programming language: it must be avoided.

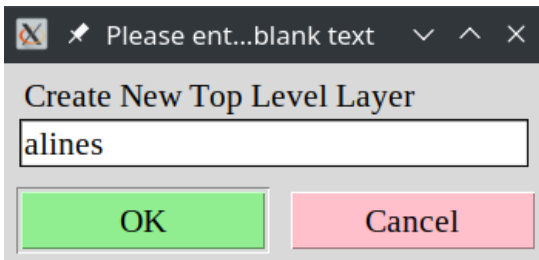
In order to create a new layer and set some attributes, for example its color, type "layer" at the command prompt (it can be abbreviated to "la") and press enter, or click "layer" in the "Format" menu.



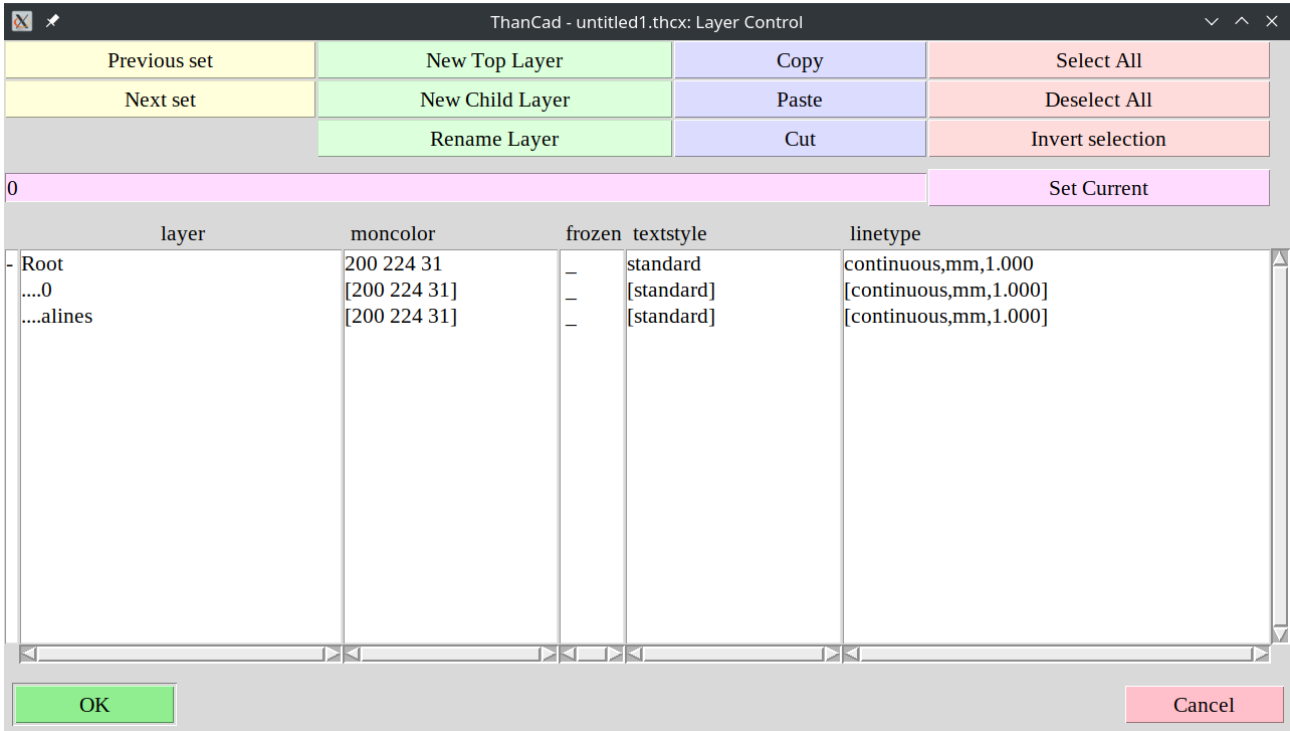
The main Layer window appears. Click the "New Top Layer" button:



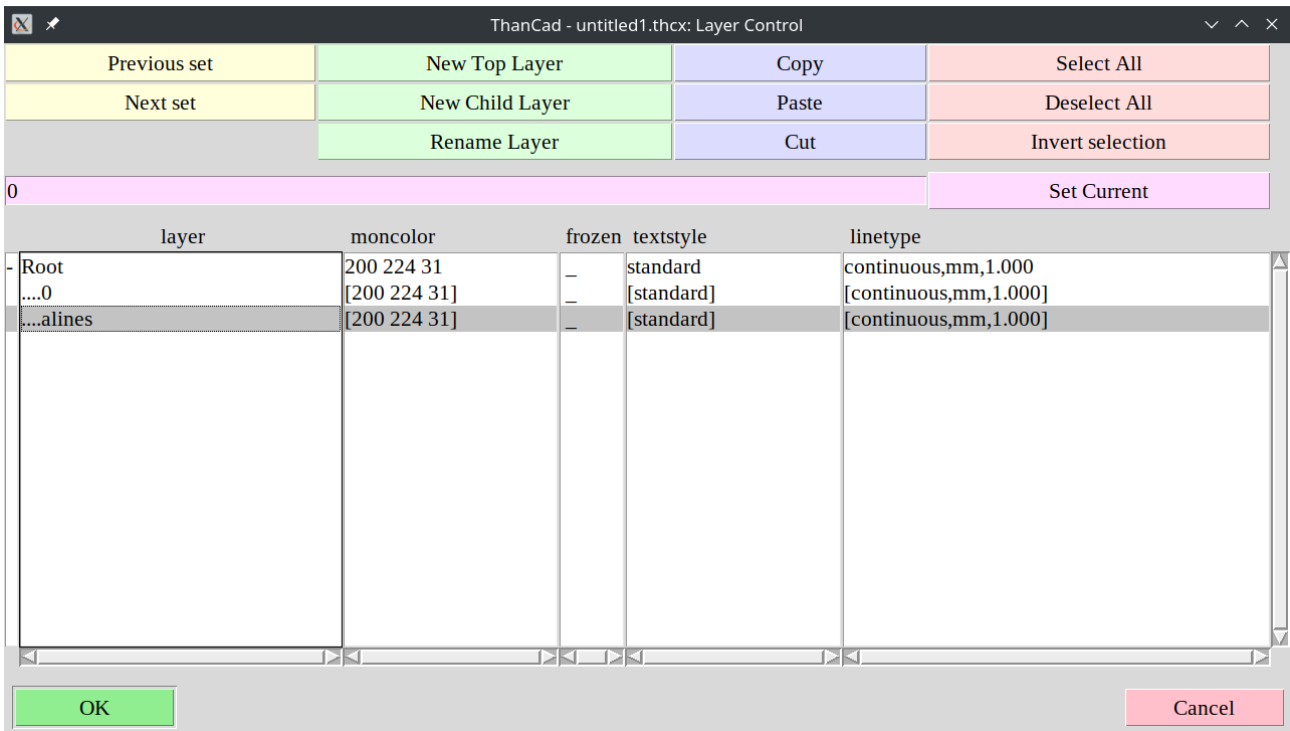
A dialog window is displayed. Type the name of the new layer, and click the "OK" button:



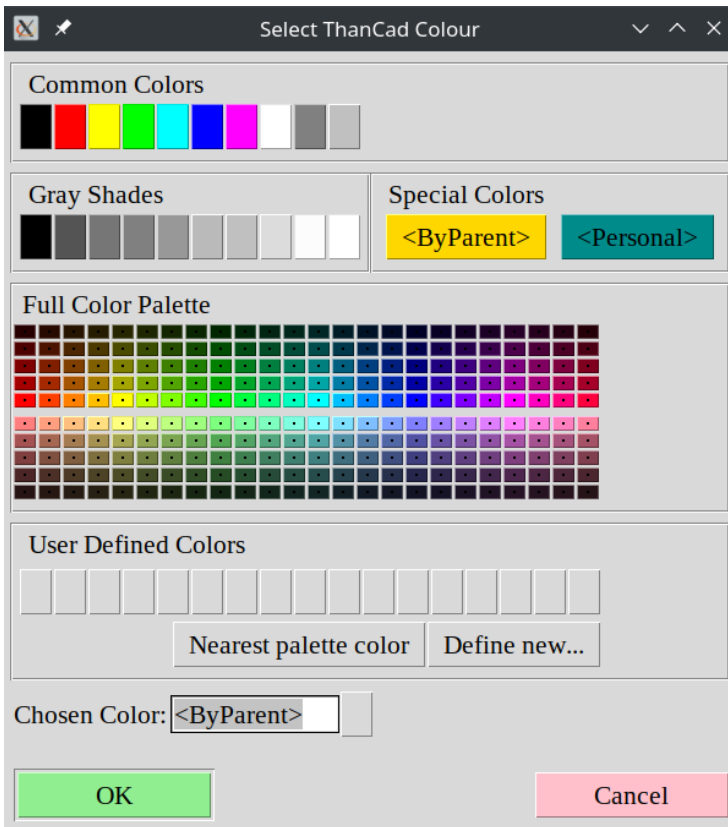
The new layer name ("alines") appears in the main Layer window:



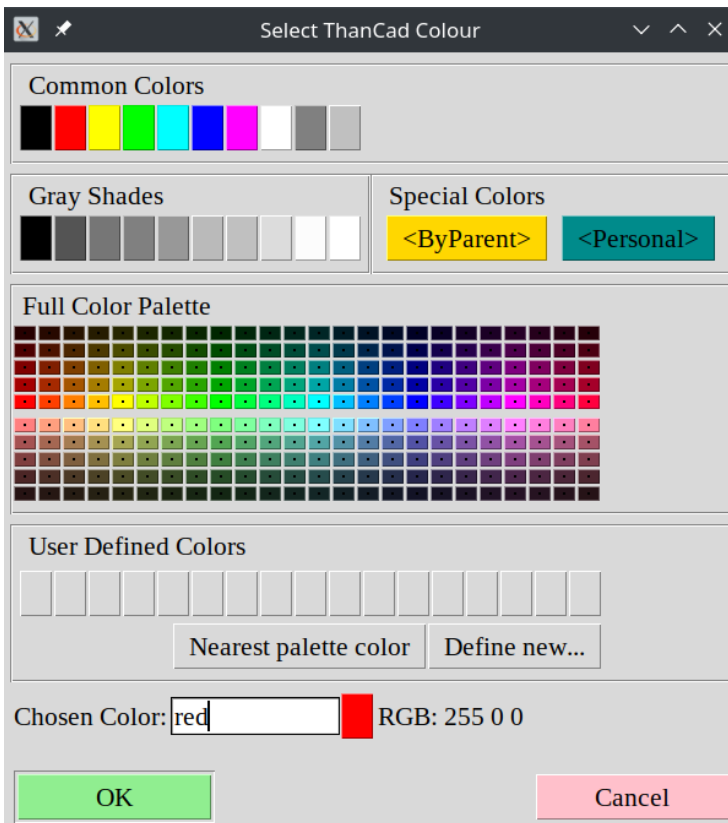
To change the color of the layer, select the layer ("alines") by clicking on the name of the layer:



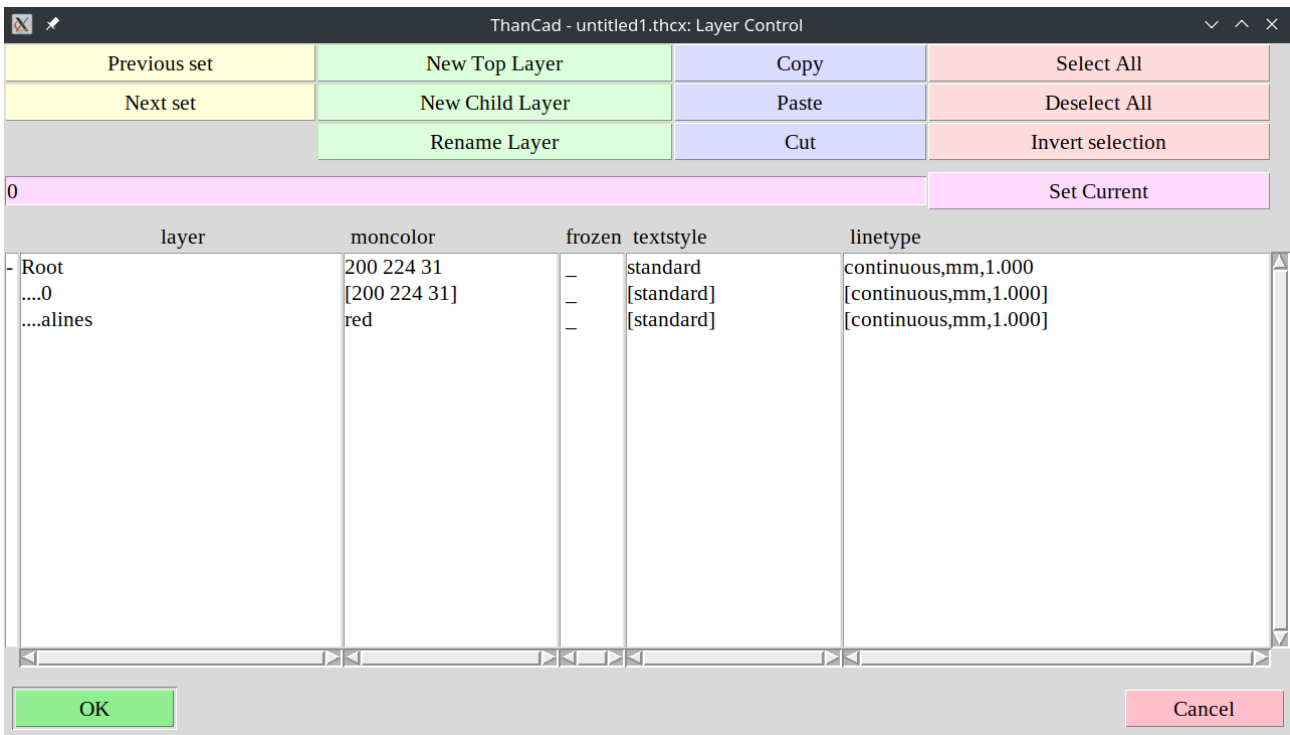
The default color of the new layer "alines" is "200 224 31" which is shade of yellow. The 3 numbers are the R,G,B values of this color. Click on the color "200 224 31" to change the color of the layer. A dialog window is displayed:



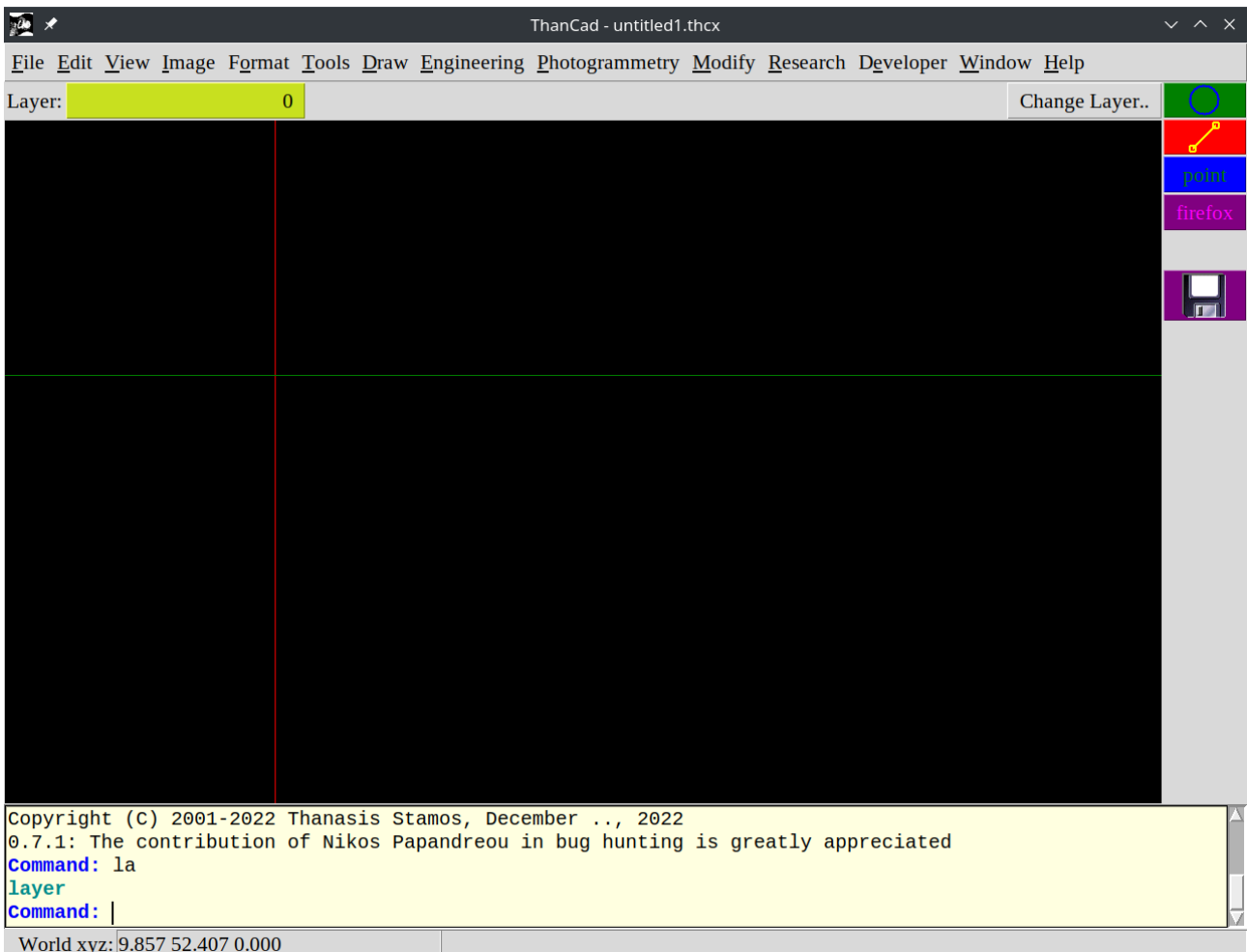
Now click on the upper left red button (below "common colors") to change the layer color to red.



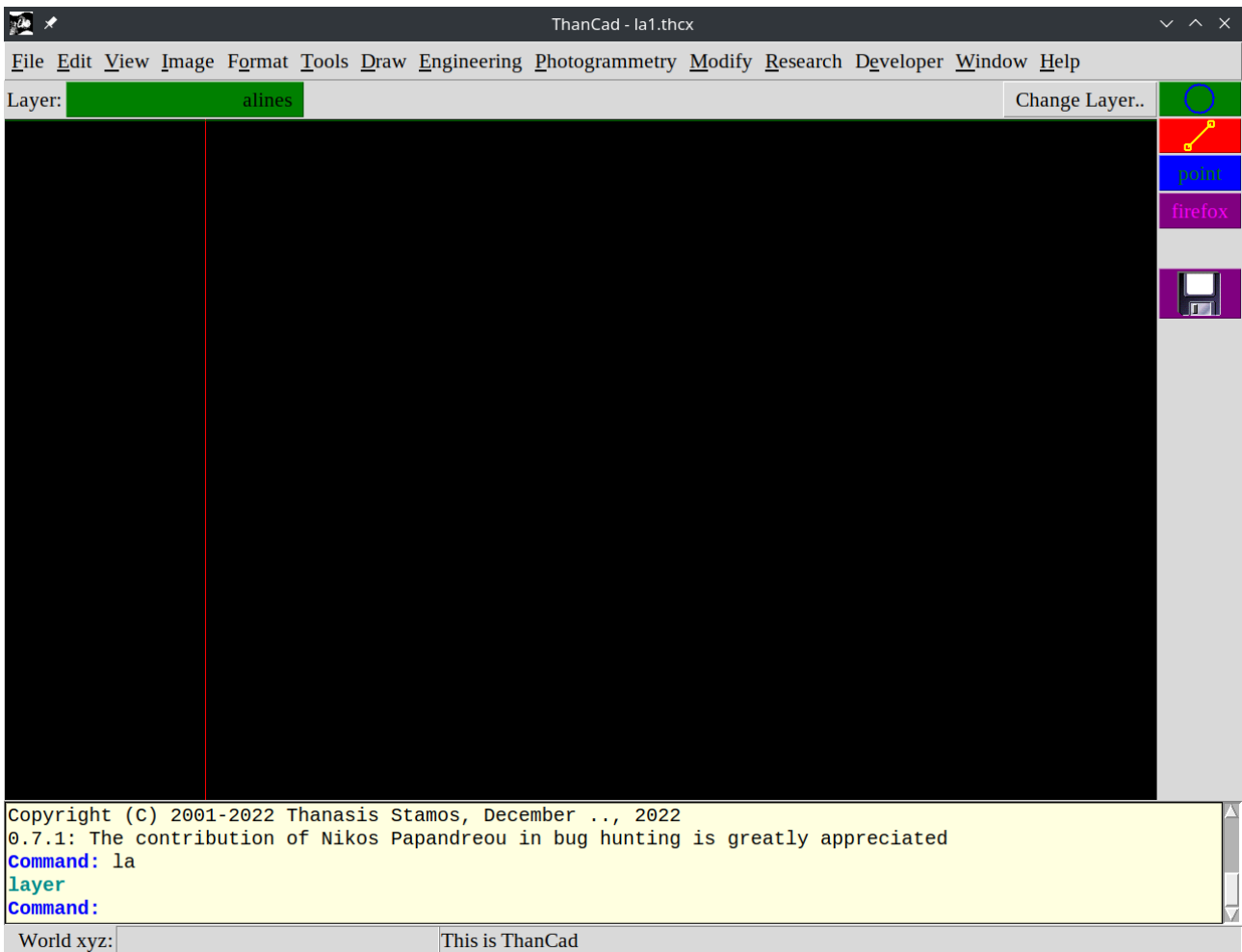
Click on "OK" to return to the main Layer window. The color of the layer is now "red".



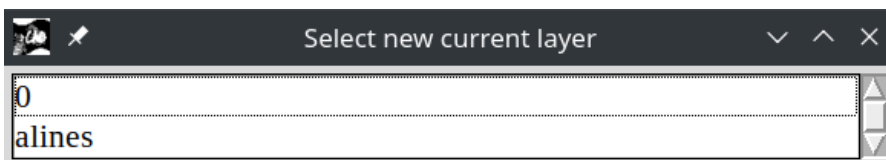
Click on "OK" to save the changes, and return to the drawing:



In order to change the current Layer, click on the upper left button (shown as dark green in the screenshot below), right after the label "Layer:" :



Click on the layer "alines" to make it current:



Layer "alines" is now the current layer. All new elements from now on will belong to this layer, and will have the color "red".

