



ΧΩΡΙΚΕΣ ΒΑΣΕΙΣ ΔΕΔΟΜΕΝΩΝ

Διάλεξη: Εγκατάσταση PostgreSQL

Διδάσκοντες:

- Νικόλαος Μήτρου, Καθ. ΣΗΜΜΥ ΕΜΠ
- Αναστάσιος Ζαφειρόπουλος, Δρ. Μηχ. ΣΗΜΜΥ ΕΜΠ

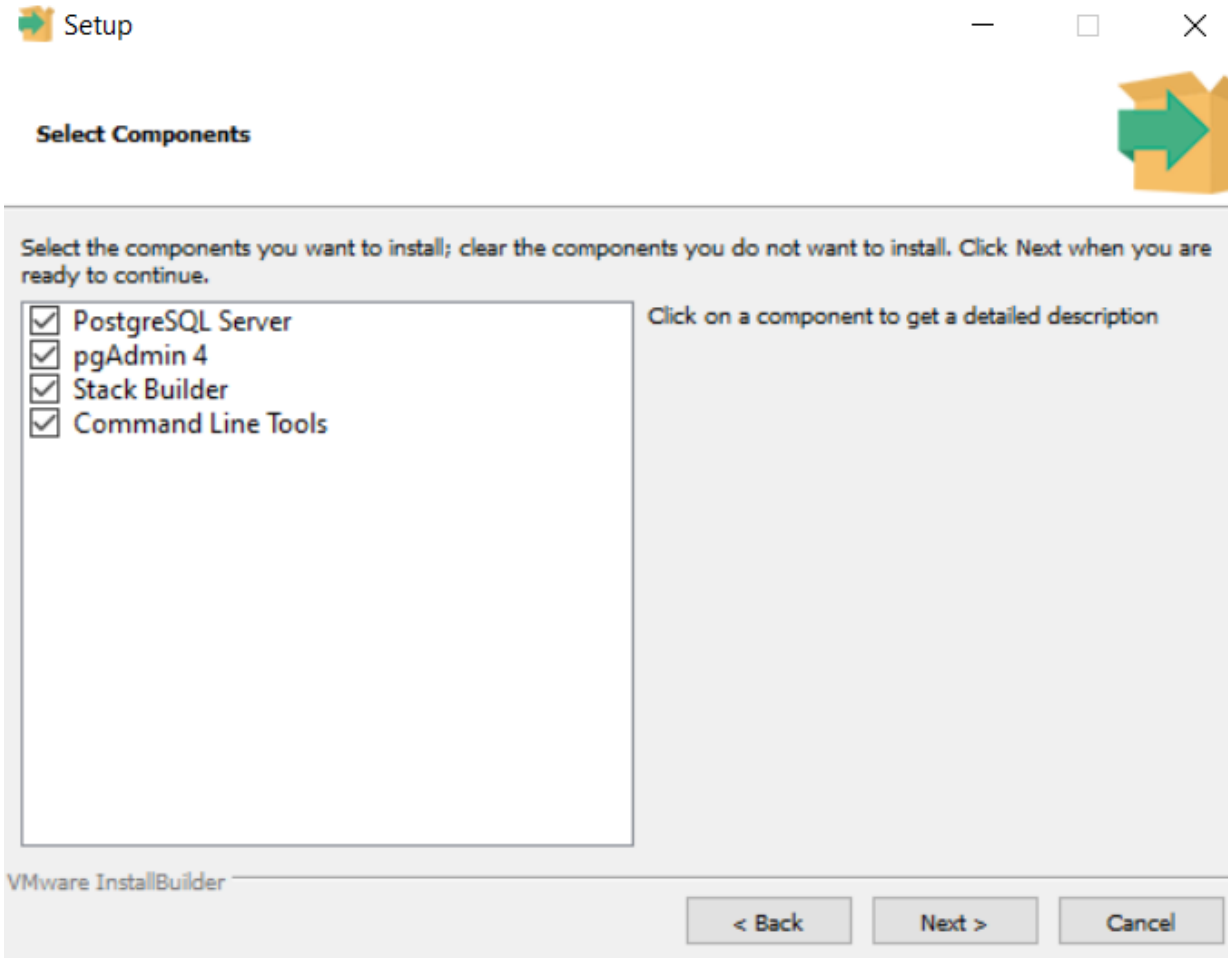


Οδηγίες Εγκατάστασης

- Κατεβάζετε την τελευταία έκδοση της PostgreSQL από τον σύνδεσμο <https://www.enterprisedb.com/downloads/postgres-postgresql-downloads>
- Ακολουθείτε τα βήματα εγκατάστασης



Οδηγίες Εγκατάστασης





Οδηγίες Εγκατάστασης

Setup

Password

Please provide a password for the database superuser (postgres).

Password

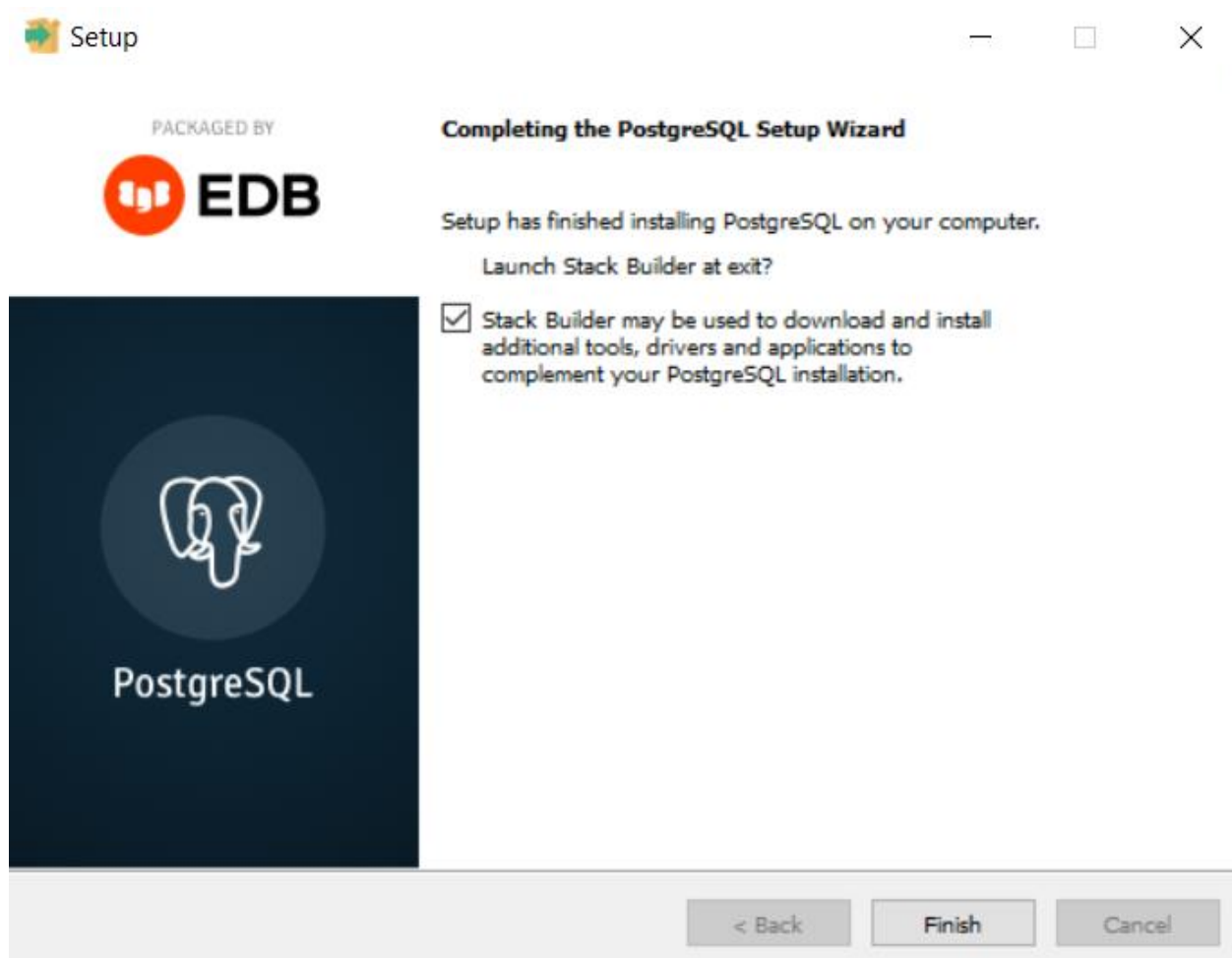
Retype password

VMware InstallBuilder

< Back Next > Cancel



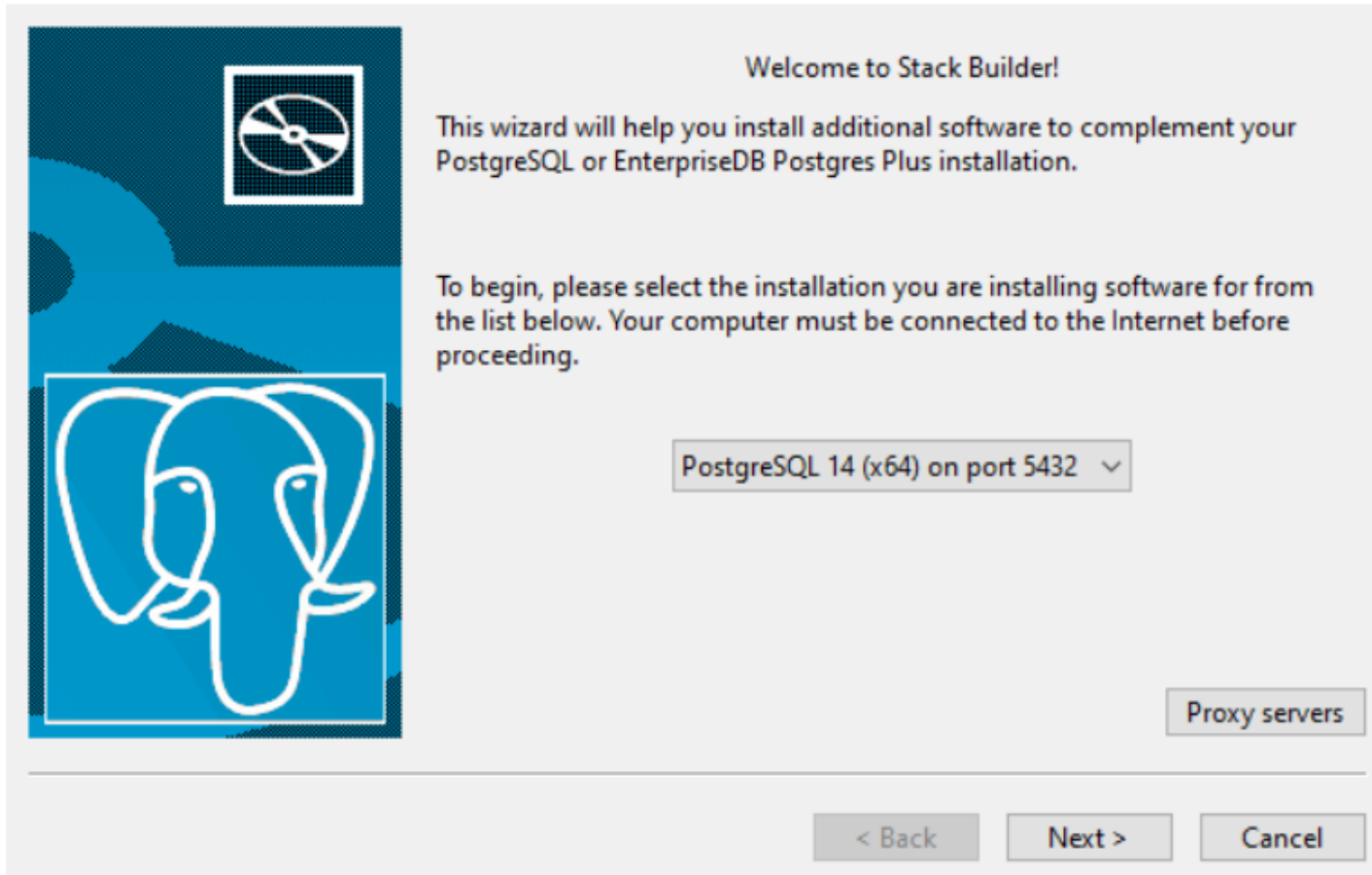
Οδηγίες Εγκατάστασης





Οδηγίες Εγκατάστασης

Stack Builder 4.2.1



Welcome to Stack Builder!

This wizard will help you install additional software to complement your PostgreSQL or EnterpriseDB Postgres Plus installation.

To begin, please select the installation you are installing software for from the list below. Your computer must be connected to the Internet before proceeding.

PostgreSQL 14 (x64) on port 5432 ▾

Proxy servers

< Back Next > Cancel



Οδηγίες Εγκατάστασης

Stack Builder 4.2.1



Please select the applications you would like to install.

- [-] Categories
 - [+] Add-ons, tools and utilities
 - [+] Database Drivers
 - [+] Database Server
 - [+] Registration-required and trial products
 - [-] Spatial Extensions
 - PostGIS 3.1 Bundle for PostgreSQL 14 (64 bit) v3.1.4
 - [+] Web Development

< Back


Next >

Cancel



Οδηγίες Εγκατάστασης

Stack Builder 4.2.1 ×



Review your selections and choose a download directory if required, and then click the Next button to begin downloading the packages you have selected.

Selected packages:

PostGIS 3.1 Bundle for PostgreSQL 13 (64 bit) v3.1.4

Download directory:

...

< BackNext >Cancel



Οδηγίες Εγκατάστασης

Stack Builder 4.2.1

PostGIS Bundle 3.1.4 for PostgreSQL x64 13 Setup

Choose Components

Choose which features of PostGIS Bundle 3.1.4 for PostgreSQL x64 13 you want to install.

Check the components you want to install and uncheck the components you don't want to install. Click Next to continue.

Select components to install:

- PostGIS
- Create spatial database

Space required: 289.4 MB

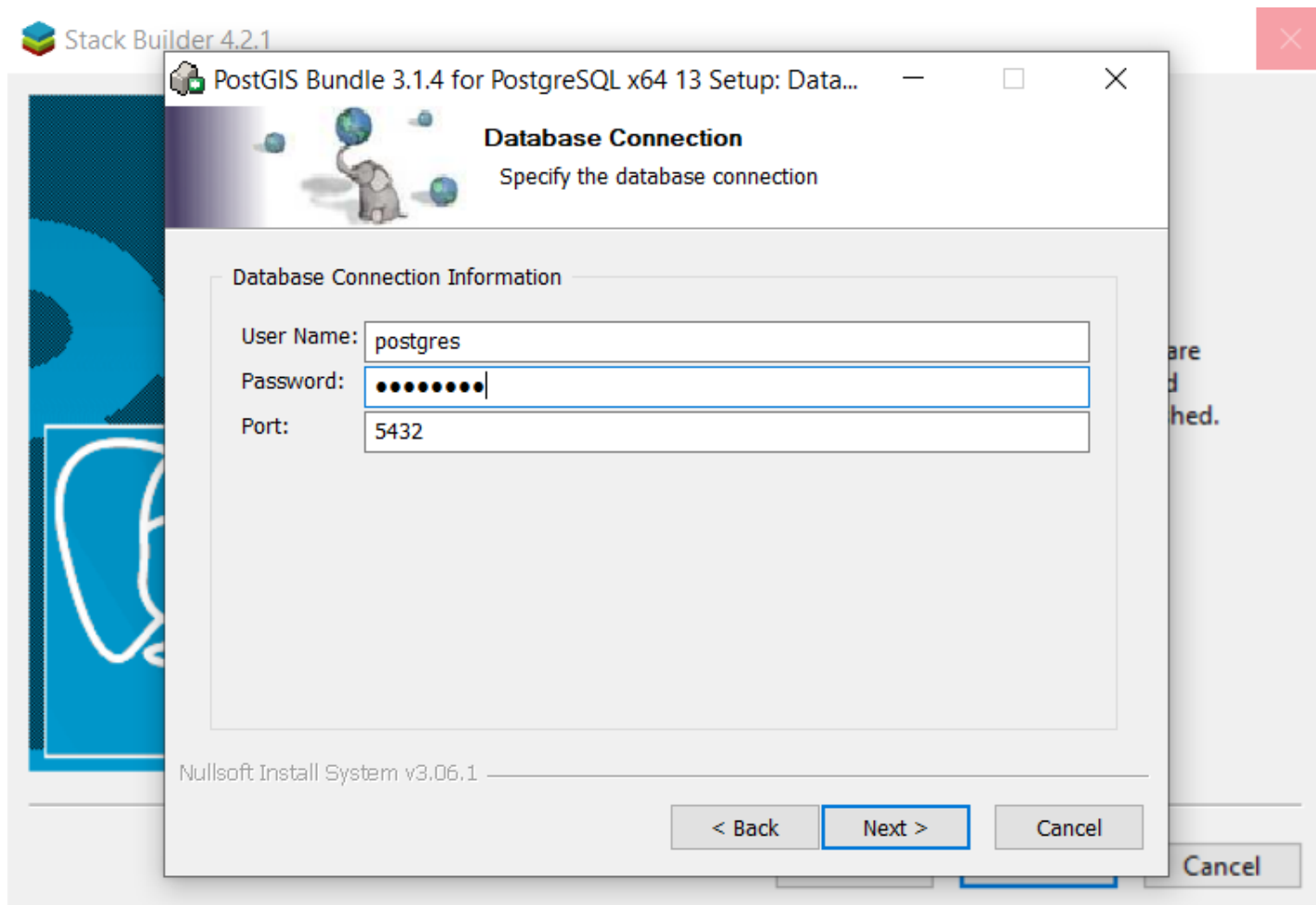
Description
Position your mouse over a component to see its description.

Nullsoft Install System v3.06.1

< Back Next > Cancel



Οδηγίες Εγκατάστασης





Οδηγίες Εγκατάστασης

Stack Builder 4.2.1

PostGIS Bundle 3.1.4 for PostgreSQL x64 13 Setup

Installing

Please wait while PostGIS Bundle 3.1.4 for PostgreSQL x64 13 is being installed.

Create shortcut: C:\ProgramData\Microsoft\Windows\Start Menu\Programs\PostGIS Bundle

PostGIS Bundle 3.1.4 for PostgreSQL x64 13 Setup

Would you like us to register the PROJ_LIB environment variable for you, needed for geometry and raster transformation to work properly? This will overwrite existing settings if you have them.

Yes No

Nullsoft Install System v3.06.1

< Back Close Cancel

Cancel



PostgreSQL – Βασικές Εντολές

- PSQL commands (interactive terminal for Postgres)
 - \list or \l - list all databases
 - \l+ - list all databases with additional information
 - \d – list tables in a database
 - \d tablename - show table definition
 - \d+ tablename - show extended table information
 - \du – list all users
 - \q quit
 - \help
 - create database dbname; - create a database
 - drop database dbname; - delete a database
 - \c dbname; - connect to a database